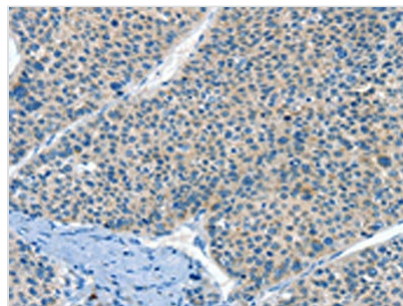




HID1 Antibody

Product Code	CSB-PA214508
Storage	Upon receipt, store at -20°C or -80°C. Avoid repeated freeze.
Uniprot No.	Q8IV36
Immunogen	Synthetic peptide of Human HID1
Raised In	Rabbit
Species Reactivity	Human,Mouse
Tested Applications	ELISA,IHC;ELISA:1:2000-1:5000,IHC:1:25-1:100
Relevance	C17orf28 (chromosome 17 open reading frame 28) is a 788 amino acid multi-pass membrane protein that is expressed in heart, skeletal muscle, colon, spleen, kidney, liver, small intestine and lung. C17orf28 may be involved in the development of cancers in a broad range of tissues. Existing as three alternatively spliced isoforms, C17orf28 is encoded by a gene mapping to human chromosome 17, which makes up over 2.5% of the human genome with about 81 million bases encoding over 1,200 genes. Two key tumor suppressor genes are associated with chromosome 17, namely, p53 and BRCA1.
Form	Liquid
Conjugate	Non-conjugated
Storage Buffer	-20°C, pH7.4 PBS, 0.05% NaN ₃ , 40% Glycerol
Purification Method	Antigen affinity purification
Isotype	IgG
Species	Homo sapiens (Human)
Target Names	HID1

Image



The image on the left is immunohistochemistry of paraffin-embedded Human liver cancer tissue using CSB-PA214508(HID1 Antibody) at dilution 1/50, on the right is treated with synthetic peptide. (Original magnification: ×200)