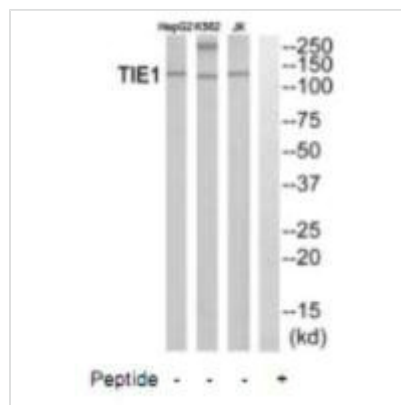




# TIE1 Antibody

<b>Product Code</b>	CSB-PA201956
<b>Storage</b>	Upon receipt, store at -20°C or -80°C. Avoid repeated freeze.
<b>Uniprot No.</b>	P35590
<b>Immunogen</b>	Synthesized peptide derived from internal of Human TIE1.
<b>Raised In</b>	Rabbit
<b>Species Reactivity</b>	Human
<b>Specificity</b>	The antibody detects endogenous levels of total TIE1 protein.
<b>Tested Applications</b>	ELISA,WB;WB:1:500-1:3000
<b>Relevance</b>	<p>Transmembrane tyrosine-protein kinase that may modulate TEK/TIE2 activity and contribute to the regulation of angiogenesis.</p> <p>Partanen J., Mol. Cell. Biol. 12:1698-1707(1992).  Partanen J.M., Submitted (JUL-1993) to the EMBL/GenBank/DDBJ databases.  Zhang Z., Protein Sci. 13:2819-2824(2004).</p>
<b>Form</b>	Rabbit IgG in phosphate buffered saline (without Mg <sup>2+</sup> and Ca <sup>2+</sup> ), pH 7.4, 150mM NaCl, 0.02% sodium azide and 50% glycerol.
<b>Purification Method</b>	The antibody was affinity-purified from rabbit antiserum by affinity-chromatography using epitope-specific immunogen.
<b>Clonality</b>	Polyclonal
<b>Alias</b>	TIE; Tyrosine-protein kinase receptor Tie-1 precursor;
<b>Product Type</b>	Polyclonal Antibody
<b>Species</b>	Homo sapiens (Human)
<b>Target Names</b>	TIE1

## Image



Western blot analysis of extracts from HepG2 cells, K562 cells and Jurkat cells, using TIE1 antibody.