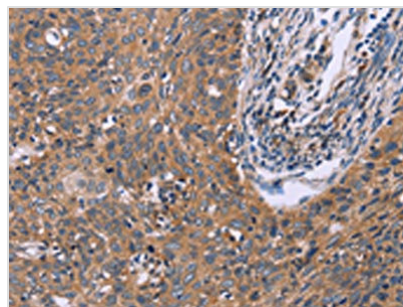




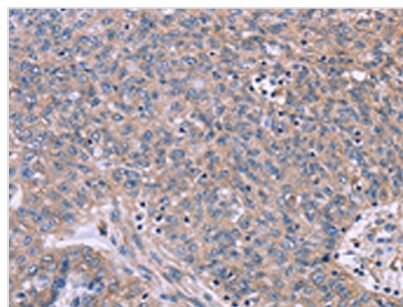
CSF2RB Antibody

Product Code	CSB-PA200894
Storage	Upon receipt, store at -20°C or -80°C. Avoid repeated freeze.
Uniprot No.	P32927
Immunogen	Synthetic peptide of Human CSF2RB
Raised In	Rabbit
Species Reactivity	Human
Tested Applications	ELISA,IHC;ELISA:1:2000-1:5000,IHC:1:50-1:200
Relevance	The protein encoded by this gene is the common beta chain of the high affinity receptor for IL-3, IL-5 and CSF. Defects in this gene have been reported to be associated with protein alveolar proteinosis (PAP).
Form	Liquid
Conjugate	Non-conjugated
Storage Buffer	-20°C, pH7.4 PBS, 0.05% NaN ₃ , 40% Glycerol
Purification Method	Antigen affinity purification
Isotype	IgG
Species	Homo sapiens (Human)
Target Names	CSF2RB

Image



The image on the left is immunohistochemistry of paraffin-embedded Human cervical cancer tissue using CSB-PA200894(CSF2RB Antibody) at dilution 1/40, on the right is treated with synthetic peptide. (Original magnification: x200)



The image on the left is immunohistochemistry of paraffin-embedded Human ovarian cancer tissue using CSB-PA200894(CSF2RB Antibody) at dilution 1/40, on the right is treated with synthetic peptide. (Original magnification: x200)