

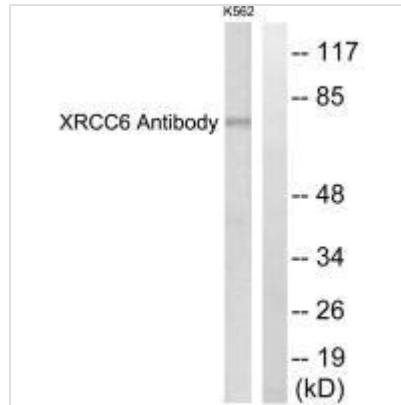


XRCC6 Antibody

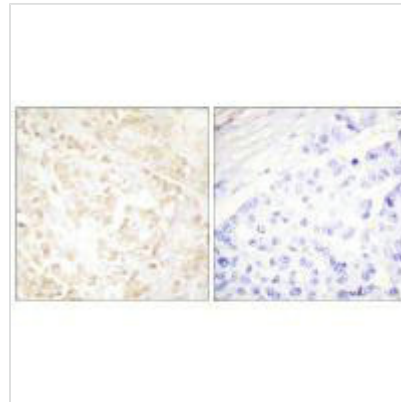
Product Code	CSB-PA157429
Storage	Upon receipt, store at -20°C or -80°C. Avoid repeated freeze.
Uniprot No.	P12956
Immunogen	Synthesized peptide derived from C-terminal of Human XRCC6.
Raised In	Rabbit
Species Reactivity	Human, Mouse
Specificity	The antibody detects endogenous levels of total XRCC6 protein.
Tested Applications	ELISA, WB, IHC; WB: 1:500-1:3000, IHC: 1:50-1:100
Relevance	<p>Single-stranded DNA-dependent ATP-dependent helicase. Has a role in chromosome translocation. The DNA helicase II complex binds preferentially to fork-like ends of double-stranded DNA in a cell cycle-dependent manner. It works in the 3'-5' direction. Binding to DNA may be mediated by XRCC6. Involved in DNA non-homologous end joining (NHEJ) required for double-strand break repair and V(D)J recombination. The XRCC5/6 dimer acts as regulatory subunit of the DNA-dependent protein kinase complex DNA-PK by increasing the affinity of the catalytic subunit PRKDC to DNA by 100-fold. The XRCC5/6 dimer is probably involved in stabilizing broken DNA ends and bringing them together. The assembly of the DNA-PK complex to DNA ends is required for the NHEJ ligation step. Required for osteocalcin gene expression. Probably also acts as a 5'-deoxyribose-5-phosphate lyase (5'-dRP lyase), by catalyzing the beta-elimination of the 5' deoxyribose-5-phosphate at an abasic site near double-strand breaks. 5'-dRP lyase activity allows to 'clean' the termini of abasic sites, a class of nucleotide damage commonly associated with strand breaks, before such broken ends can be joined. The XRCC5/6 dimer together with APEX1 acts as a negative regulator of transcription.</p> <p>Yanhong Liu, Carcinogenesis, Mar 2007; 10.1093. Erich M. Sturgis, Arch Otolaryngol Head Neck Surg, Feb 1999; 125: 185. Yansong Gu, PNAS, Jul 1997; 94: 8076. Kyoung-Mu Lee, Clin. Cancer Res., Jun 2005; 11: 4620 - 4626.</p>
Form	Rabbit IgG in phosphate buffered saline (without Mg ²⁺ and Ca ²⁺), pH 7.4, 150mM NaCl, 0.02% sodium azide and 50% glycerol.
Purification Method	The antibody was affinity-purified from rabbit antiserum by affinity-chromatography using epitope-specific immunogen.
Clonality	Polyclonal
Alias	70 kDa subunit of Ku antigen; ATP-dependent DNA helicase II; 70 kDa subunit; CTC box binding factor 75 kDa subunit; CTC75
Product Type	Polyclonal Antibody
Species	Homo sapiens (Human)

**Target Names**

XRCC6

Image

Western blot analysis of extracts from K562 cells, using XRCC6 antibody.



Immunohistochemistry analysis of paraffin-embedded human breast carcinoma tissue using XRCC6 antibody.