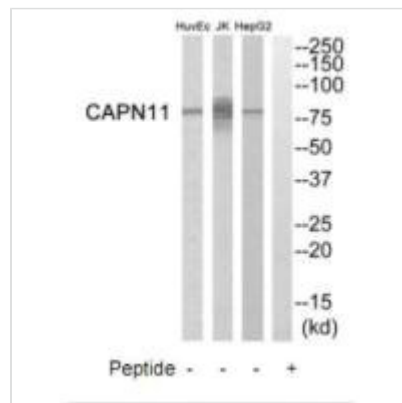




# CAPN11 Antibody

<b>Product Code</b>	CSB-PA136572
<b>Storage</b>	Upon receipt, store at -20°C or -80°C. Avoid repeated freeze.
<b>Uniprot No.</b>	Q9UMQ6
<b>Immunogen</b>	Synthesized peptide derived from internal of Human CAPN11.
<b>Raised In</b>	Rabbit
<b>Species Reactivity</b>	Human
<b>Specificity</b>	The antibody detects endogenous levels of total CAPN11 protein.
<b>Tested Applications</b>	ELISA, WB; WB: 1:500-1:3000
<b>Relevance</b>	<p>Calcium-regulated non-lysosomal thiol-protease which catalyzes limited proteolysis of substrates involved in cytoskeletal remodeling and signal transduction.</p> <p>Ota T., Nat. Genet. 36:40-45(2004).  Mungall A.J., Nature 425:805-811(2003).  Mural R.J., Submitted (JUL-2005) to the EMBL/GenBank/DDBJ databases.</p>
<b>Form</b>	Rabbit IgG in phosphate buffered saline (without Mg <sup>2+</sup> and Ca <sup>2+</sup> ), pH 7.4, 150mM NaCl, 0.02% sodium azide and 50% glycerol.
<b>Purification Method</b>	The antibody was affinity-purified from rabbit antiserum by affinity-chromatography using epitope-specific immunogen.
<b>Clonality</b>	Polyclonal
<b>Alias</b>	Calpain-11; Calcium-activated neutral proteinase 11; CANP 11;
<b>Product Type</b>	Polyclonal Antibody
<b>Species</b>	Homo sapiens (Human)
<b>Target Names</b>	CAPN11

## Image



Western blot analysis of extracts from HepG2 cells, Jurkat cells and HuvEc cells, using CAPN11 antibody.