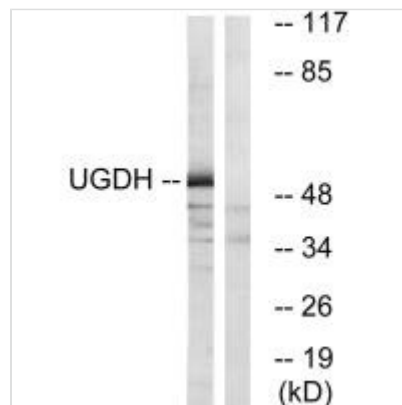




# UGDH Antibody

<b>Product Code</b>	CSB-PA132780
<b>Storage</b>	Upon receipt, store at -20°C or -80°C. Avoid repeated freeze.
<b>Uniprot No.</b>	O60701
<b>Immunogen</b>	Synthesized peptide derived from internal of Human UGDH.
<b>Raised In</b>	Rabbit
<b>Species Reactivity</b>	Human,Mouse,Rat
<b>Specificity</b>	The antibody detects endogenous levels of total UGDH protein.
<b>Tested Applications</b>	ELISA,WB;WB:1:500-1:3000
<b>Relevance</b>	Involved in the biosynthesis of glycosaminoglycans; hyaluronan, chondroitin sulfate, and heparan sulfate.  Spicer A.P., J. Biol. Chem. 273:25117-25124(1998). Peng H.L., Proc. Natl. Sci. Counc. Repub. China, B, Life Sci. 22:166-172(1998). Chang M.L., Submitted (FEB-2000) to the EMBL/GenBank/DDBJ databases.
<b>Form</b>	Rabbit IgG in phosphate buffered saline (without Mg <sup>2+</sup> and Ca <sup>2+</sup> ), pH 7.4, 150mM NaCl, 0.02% sodium azide and 50% glycerol.
<b>Purification Method</b>	The antibody was affinity-purified from rabbit antiserum by affinity-chromatography using epitope-specific immunogen.
<b>Clonality</b>	Polyclonal
<b>Alias</b>	EC 1.1.1.22; GDH; UDP-Glc dehydrogenase; UDP-GlcDH; UDP-glucose 6-dehydrogenase
<b>Product Type</b>	Polyclonal Antibody
<b>Species</b>	Homo sapiens (Human)
<b>Target Names</b>	UGDH

## Image



Western blot analysis of extracts from COLO cells, using UGDH antibody.