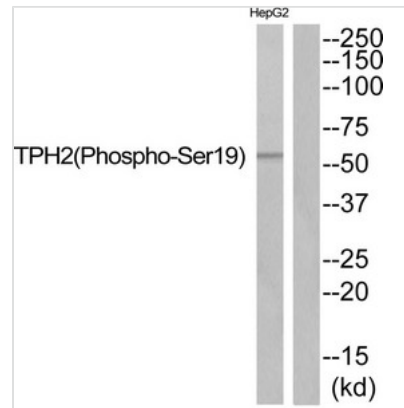




Phospho-TPH2 (Ser19) Antibody

| | |
|----------------------------|---|
| Product Code | CSB-PA123981 |
| Storage | Upon receipt, store at -20°C or -80°C. Avoid repeated freeze. |
| Uniprot No. | Q8IWU9 |
| Immunogen | Peptide sequence around phosphorylation site of Serine 19(G-F-S(p)-L-D) derived from Human TPH2. |
| Raised In | Rabbit |
| Species Reactivity | Human,Mouse,Rat |
| Specificity | The antibody detects endogenous levels of TPH2 only when phosphorylated at serine 19. |
| Tested Applications | ELISA,WB;WB:1:500-1:1000 |
| Relevance | <p>This gene encodes a member of the pterin-dependent aromatic acid hydroxylase family. The encoded protein catalyzes the first and rate limiting step in the biosynthesis of serotonin, an important hormone and neurotransmitter. The human genome contains two related tryptophan hydroxylases, one on chromosome 11p15-p14 and one on chromosome 12q21. This gene is expressed predominantly in the brain stem. Mutations in this gene may be associated with psychiatric diseases such as bipolar affective disorder and major depression.</p> <p>Walther D.J., Science 299:76-76(2003). Scherer S.E., Nature 440:346-351(2006).</p> |
| Form | Rabbit IgG in phosphate buffered saline (without Mg ²⁺ and Ca ²⁺), pH 7.4, 150mM NaCl, 0.02% sodium azide and 50% glycerol. |
| Purification Method | Antibodies were produced by immunizing rabbits with synthetic phosphopeptide and KLH conjugates. Antibodies were purified by affinity-chromatography using epitope-specific phosphopeptide. Non-phospho specific antibodies were removed by chromatography |
| Clonality | Polyclonal |
| Alias | ADHD7; NTPH; TPH2; |
| Product Type | Polyclonal Antibody |
| Species | Homo sapiens (Human) |
| Target Names | TPH2 |
| Image | |



Western blot analysis of extracts from HepG2 cells using TPH2 (Phospho-Ser19) Antibody. The lane on the right is treated with the antigen-specific peptide.

Product Modify

Phospho-Ser19