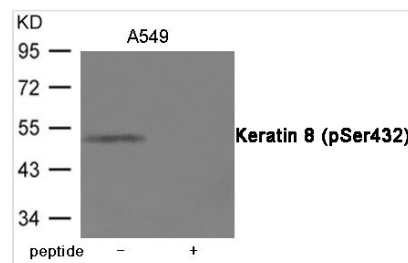




Phospho-KRT8 (Ser432) Antibody

Product Code	CSB-PA113927
Storage	Upon receipt, store at -20°C or -80°C. Avoid repeated freeze.
Uniprot No.	P05787
Immunogen	Peptide sequence around phosphorylation site of Serine 432(L-T-S(p)-P-G) derived from Human Keratin 8.
Raised In	Rabbit
Species Reactivity	Human,Mouse,Rat
Specificity	The antibody detects endogenous level of Keratin 8 only when phosphorylated at Serine 432.
Tested Applications	ELISA,WB;WB:1:500-1:1000
Relevance	Together with KRT19, helps to link the contractile apparatus to dystrophin at the costameres of striated muscle.
Form	Supplied at 1.0mg/mL in phosphate buffered saline (without Mg ²⁺ and Ca ²⁺), pH 7.4, 150mM NaCl, 0.02% sodium azide and 50% glycerol.
Purification Method	Antibodies were produced by immunizing rabbits with synthetic phosphopeptide and KLH conjugates. Antibodies were purified by affinity-chromatography using epitope-specific phosphopeptide. Non-phospho specific antibodies were removed by chromatography use
Clonality	Polyclonal
Alias	K8, KO, CK8, CYK8, CK-8
Product Type	Polyclonal Antibody
Species	Homo sapiens (Human)
Target Names	KRT8

Image



Western blot analysis of extracts from A549 cells using Keratin 8 (Phospho-Ser432) Antibody. The lane on the right is treated with the antigen-specific peptide.

Product Modify Phospho-Ser432