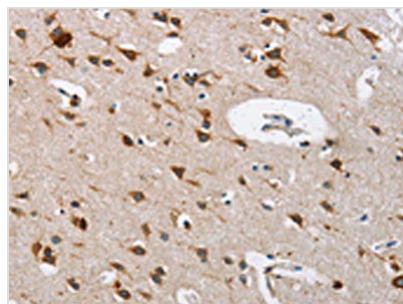




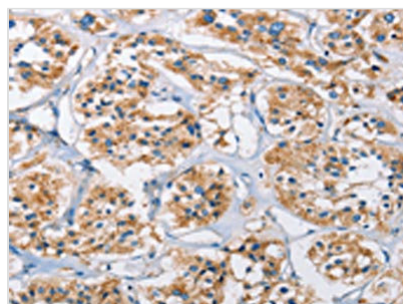
# CTSL Antibody

<b>Product Code</b>	CSB-PA092272
<b>Storage</b>	Upon receipt, store at -20°C or -80°C. Avoid repeated freeze.
<b>Uniprot No.</b>	P07711
<b>Immunogen</b>	Fusion protein of Human CTSL
<b>Raised In</b>	Rabbit
<b>Species Reactivity</b>	Human, Mouse
<b>Tested Applications</b>	ELISA, WB, IHC; ELISA: 1:2000-1:5000, WB: 1:500-1:2000, IHC: 1:50-1:200
<b>Relevance</b>	The protein encoded by this gene is a lysosomal cysteine proteinase that plays a major role in intracellular protein catabolism. Its substrates include collagen and elastin, as well as alpha-1 protease inhibitor, a major controlling element of neutrophil elastase activity. The encoded protein has been implicated in several pathologic processes, including myofibril necrosis in myopathies and in myocardial ischemia, and in the renal tubular response to proteinuria.
<b>Form</b>	Liquid
<b>Conjugate</b>	Non-conjugated
<b>Storage Buffer</b>	-20°C, pH7.4 PBS, 0.05% NaN <sub>3</sub> , 40% Glycerol
<b>Purification Method</b>	Antigen affinity purification
<b>Isotype</b>	IgG
<b>Alias</b>	cathepsin L
<b>Species</b>	Homo sapiens (Human)
<b>Target Names</b>	CTSL

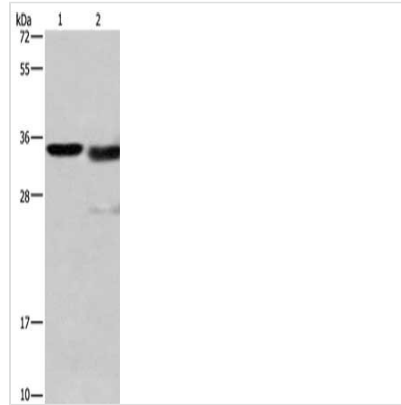
## Image



The image on the left is immunohistochemistry of paraffin-embedded Human brain tissue using CSB-PA092272(CTSL Antibody) at dilution 1/40, on the right is treated with fusion protein. (Original magnification: x200)



The image on the left is immunohistochemistry of paraffin-embedded Human thyroid cancer tissue using CSB-PA092272(CTSL Antibody) at dilution 1/40, on the right is treated with fusion protein. (Original magnification: x200)



Gel: 15%SDS-PAGE, Lysate: 40  $\mu$ g, Lane 1-2:  
Mouse kidney tissue, A172 cells, Primary  
antibody: CSB-PA092272(CTSL Antibody) at  
dilution 1/900, Secondary antibody: Goat anti  
rabbit IgG at 1/8000 dilution, Exposure time: 10  
seconds