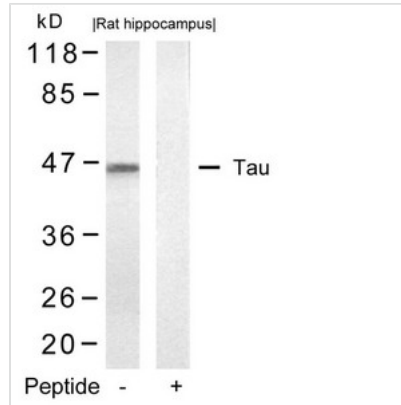




MAPT (Ab-422) Antibody

Product Code	CSB-PA087062
Storage	Upon receipt, store at -20°C or -80°C. Avoid repeated freeze.
Uniprot No.	P10636
Immunogen	Peptide sequence around aa.420~424 (V-D-S-P-Q) derived from Human Tau.
Raised In	Rabbit
Species Reactivity	Human,Mouse,Rat
Specificity	The antibody detects endogenous level of total Tau protein.
Tested Applications	ELISA,WB;WB:1:500-1:1000
Relevance	<p>Promotes microtubule assembly and stability, and might be involved in the establishment and maintenance of neuronal polarity. The C-terminus binds axonal microtubules while the N-terminus binds neural plasma membrane components, suggesting that tau functions as a linker protein between both. Axonal polarity is predetermined by tau localization (in the neuronal cell) in the domain of the cell body defined by the centrosome. The short isoforms allow plasticity of the cytoskeleton whereas the longer isoforms may preferentially play a role in its stabilization.</p> <p>Gong CX, et al. (2006) J Biomed Biotechnol. 2006: 31825 Gamblin TC, et al. (2003) Proc Natl Acad Sci U S A. 2003 Aug 19; 100(17): 10032-10037 Xu X., et al. (1997) Proc Natl Acad Sci U S A. Nov 11; 94(23): 12655-12660</p>
Form	Supplied at 1.0mg/mL in phosphate buffered saline (without Mg ²⁺ and Ca ²⁺), pH 7.4, 150mM NaCl, 0.02% sodium azide and 50% glycerol.
Purification Method	Antibodies were produced by immunizing rabbits with synthetic peptide and KLH conjugates. Antibodies were purified by affinity-chromatography using epitope-specific peptide.
Clonality	Polyclonal
Alias	MAPT; MTAPT; MTBT1; Neurofibrillary tangle protein; PHF-tau
Product Type	Polyclonal Antibody
Species	Homo sapiens (Human)
Target Names	MAPT
Image	



Western blot analysis of extracts from rat hippocampus tissue using Tau(Ab-422) Antibody and the same antibody preincubated with blocking peptide.