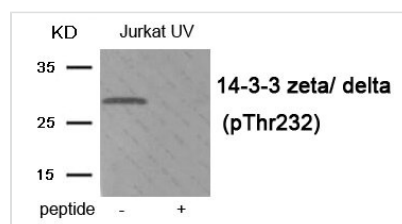




Phospho-YWHAZ (Thr232) Antibody

| | |
|----------------------------|--|
| Product Code | CSB-PA086433 |
| Storage | Upon receipt, store at -20°C or -80°C. Avoid repeated freeze. |
| Uniprot No. | P63104 |
| Immunogen | Peptide sequence around phosphorylation site of threonine232(S-D-T(p)-Q-G) derived from Human 14-3-3 zeta/ delta . |
| Raised In | Rabbit |
| Species Reactivity | Human,Mouse,Rat |
| Specificity | The antibody detects endogenous level of 14-3-3 zeta/ delta only when phosphorylated at threonine 232. |
| Tested Applications | ELISA,WB;WB:1:500-1:1000 |
| Relevance | <p>Adapter protein implicated in the regulation of a large spectrum of both general and specialized signaling pathways. Binds to a large number of partners, usually by recognition of a phosphoserine or phosphothreonine motif. Binding generally results in the modulation of the activity of the binding partner.</p> <p>Sluchanko NN, et al. (2011) Arch Biochem Biophys 506, 24-34 Sluchanko NN, et al. (2008) Arch Biochem Biophys 477, 305-12 Clokie SJ, et al. (2005) FEBS J 272, 3767-76</p> |
| Form | Rabbit IgG in phosphate buffered saline (without Mg ²⁺ and Ca ²⁺), pH 7.4, 150mM NaCl, 0.02% sodium azide and 50% glycerol. |
| Purification Method | Antibodies were produced by immunizing rabbits with synthetic phosphopeptide and KLH conjugates. Antibodies were purified by affinity-chromatography using epitope-specific phosphopeptide. Non-phospho specific antibodies were removed by chromatography |
| Clonality | Polyclonal |
| Alias | 1433Z; 143Z; FAS; YWHAZ; |
| Product Type | Polyclonal Antibody |
| Species | Homo sapiens (Human) |
| Target Names | YWHAZ |

Image



Western blot analysis of extracts from Jurkat cells treated with UV using Phospho-14-3-3 zeta/ delta (Thr232) antibody. The lane on the right is treated with the antigen-specific peptide.



Product Modify

Phospho-Thr232