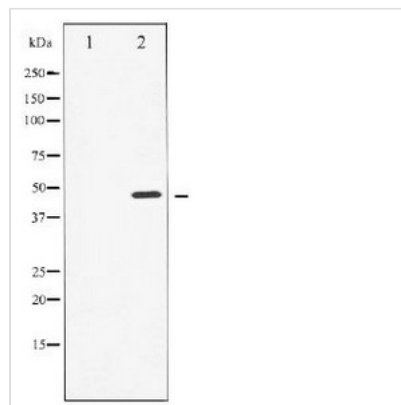




AFP Antibody

Product Code	CSB-PA075526
Storage	Upon receipt, store at -20°C or -80°C. Avoid repeated freeze.
Uniprot No.	P02771
Immunogen	A synthesized peptide derived from Human Cyclin E1
Raised In	Rabbit
Species Reactivity	Human
Specificity	Cyclin E1 Antibody detects endogenous levels of total Cyclin E1
Tested Applications	ELISA,WB;WB:1:500-1:2000
Relevance	A member of the highly conserved cyclin family, whose members are characterized by a dramatic periodicity in protein abundance through the cell cycle. Cyclins function as regulators of CDK kinases.
Form	Supplied at 2mg/mL in phosphate buffered saline (without Mg ²⁺ and Ca ²⁺), pH 7.3, 0.05% sodium azide and 50% glycerol.
Purification Method	Antigen Affinity Purified
Clonality	Polyclonal
Alias	alpha-fetoprotein, FETA, HPAFP
Target Names	AFP

Image



Western blot analysis of Cyclin E1 expression in Paclitaxel treated HeLa whole cell lysates, The lane on the left is treated with the antigen-specific peptide.