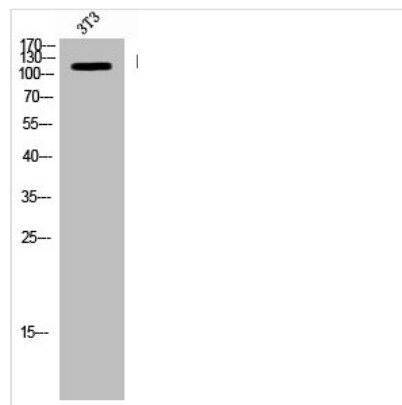




KSR1 Antibody

Product Code	CSB-PA070158
Storage	Upon receipt, store at -20°C or -80°C. Avoid repeated freeze.
Uniprot No.	Q8IVT5
Immunogen	Synthesized peptide derived from Human Ksr-1 around the non-phosphorylation site of S392.
Raised In	Rabbit
Species Reactivity	Human,Mouse
Tested Applications	WB,IHC,IF,ELISA;WB:1/500-1/2000.IHC:1/100-1/300.IF:1/200-1/1000.ELISA:1/20000
Form	Liquid
Conjugate	Non-conjugated
Storage Buffer	Liquid in PBS containing 50% glycerol, 0.5% BSA and 0.02% sodium azide.
Purification Method	The antibody was affinity-purified from rabbit antiserum by affinity-chromatography using epitope-specific immunogen.
Isotype	IgG
Alias	KSR1; KSR; Kinase suppressor of Ras 1
Species	Homo sapiens (Human)
Target Names	KSR1

Image



Western Blot analysis of NIH-3T3 cells using Ksr-1 Polyclonal Antibody