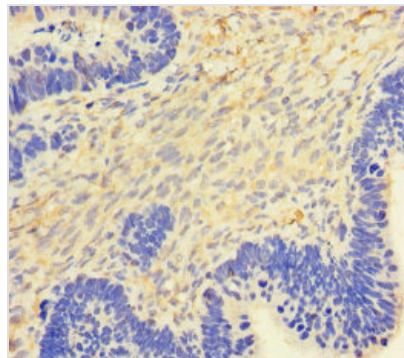




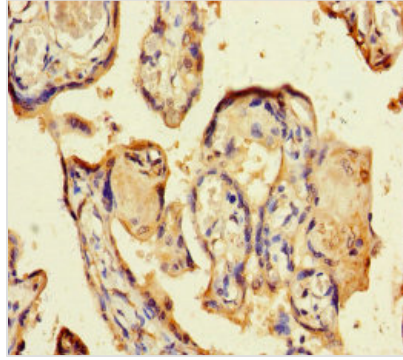
CSF2 Antibody

| | |
|----------------------------|--|
| Product Code | CSB-PA06475A0Rb |
| Storage | Upon receipt, store at -20°C or -80°C. Avoid repeated freeze. |
| Uniprot No. | P04141 |
| Immunogen | Recombinant Human Granulocyte-macrophage colony-stimulating factor protein (18-144AA) |
| Raised In | Rabbit |
| Species Reactivity | Human |
| Tested Applications | ELISA, IHC; Recommended dilution: IHC:1:20-1:200 |
| Relevance | Cytokine that stimulates the growth and differentiation of hematopoietic precursor cells from various lineages, including granulocytes, macrophages, eosinophils and erythrocytes. |
| Form | Liquid |
| Conjugate | Non-conjugated |
| Storage Buffer | Preservative: 0.03% Proclin 300 Constituents: 50% Glycerol, 0.01M PBS, PH 7.4 |
| Purification Method | >95%, Protein G purified |
| Isotype | IgG |
| Clonality | Polyclonal |
| Alias | Granulocyte-macrophage colony-stimulating factor (GM-CSF) (Colony-stimulating factor) (CSF) (Molgramostin) (Sargramostim), CSF2, GMCSF |
| Species | Human |
| Research Area | Immunology |
| Target Names | CSF2 |

Image



Immunohistochemistry of paraffin-embedded human ovarian cancer using CSB-PA06475A0Rb at dilution of 1:100



Immunohistochemistry of paraffin-embedded human placenta tissue using CSB-PA06475A0Rb at dilution of 1:100