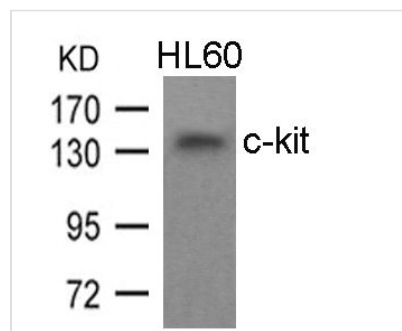




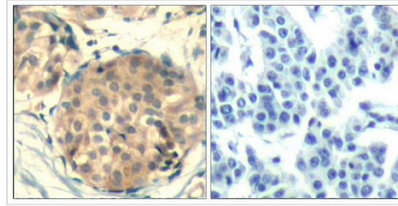
KIT (Ab-936) Antibody

Product Code	CSB-PA060048
Storage	Upon receipt, store at -20°C or -80°C. Avoid repeated freeze.
Uniprot No.	P10721
Immunogen	Peptide sequence around aa.934~938 (H-I-Y-S-N) derived from Human c-Kit.
Raised In	Rabbit
Species Reactivity	Human
Specificity	The antibody detects endogenous level of total c-Kit protein.
Tested Applications	ELISA,WB,IHC;WB:1:500-1:1000,IHC:1:50-1:200
Relevance	<p>This is the receptor for stem cell factor (mast cell growth factor). It has a tyrosine-protein kinase activity. Binding of the ligands leads to the autophosphorylation of KIT and its association with substrates such as phosphatidylinositol 3-kinase (Pi3K)</p> <p>Martin, F.H. et al. (1990) Cell 63, 203-11. Blume-Jensen, P. et al. (2000) Nat Genet 24, 157-62. Gommerman, J.L. et al. (1997) J Biol Chem 272, 30519-25. Nocka, K. et al. (1990) EMBO J 9, 1805-13.</p>
Form	Supplied at 1.0mg/mL in phosphate buffered saline (without Mg ²⁺ and Ca ²⁺), pH 7.4, 150mM NaCl, 0.02% sodium azide and 50% glycerol.
Purification Method	Antibodies were produced by immunizing rabbits with synthetic peptide and KLH conjugates. Antibodies were purified by affinity-chromatography using epitope-specific peptide.
Clonality	Polyclonal
Alias	KIT; CD117; SCFR; PBT;
Product Type	Polyclonal Antibody
Species	Homo sapiens (Human)
Target Names	KIT

Image



Western blot analysis of extracts from HL60 cells using c-kit(Ab-936) Antibody.



Immunohistochemical analysis of paraffin-embedded human breast carcinoma tissue using c-kit(Ab-936) Antibody(left) or the same antibody preincubated with blocking peptide(right).