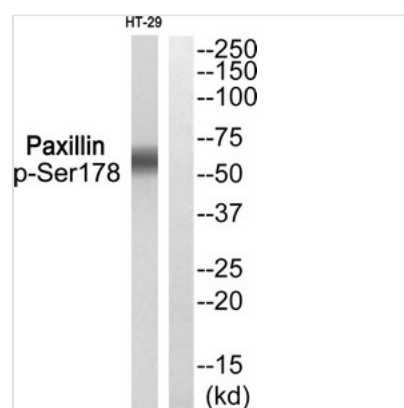




Phospho-PXN (Ser178) Antibody

Product Code	CSB-PA057796
Storage	Upon receipt, store at -20°C or -80°C. Avoid repeated freeze.
Uniprot No.	P49023
Immunogen	Peptide sequence around phosphorylation site of Serine 178(A-L-S(p)-P-L) derived from Human Paxillin.
Raised In	Rabbit
Species Reactivity	Human,Mouse,Rat
Specificity	The Antibody detects endogenous levels of Paxillin only when phosphorylated at Ser178.
Tested Applications	ELISA,WB;WB:1:500-1:1000
Relevance	<p>Cytoskeletal protein involved in actin-membrane attachment at sites of cell adhesion to the extracellular matrix (focal adhesion).</p> <p>S Chen L.B., Griffin J.D. J. Biol. Chem. 270:5039-5047(1995) Bell G.I.Submitted (JAN-1997) to the EMBL/GenBank/DDBJ databases</p>
Form	Rabbit IgG in phosphate buffered saline (without Mg ²⁺ and Ca ²⁺), pH 7.4, 150mM NaCl, 0.02% sodium azide and 50% glycerol.
Purification Method	Antibodies were produced by immunizing rabbits with synthetic phosphopeptide and KLH conjugates. Antibodies were purified by affinity-chromatography using epitope-specific phosphopeptide. Non-phospho specific antibodies were removed by chromatography
Clonality	Polyclonal
Alias	Paxillin; PXN;
Product Type	Polyclonal Antibody
Species	Homo sapiens (Human)
Target Names	PXN

Image



Western blot analysis of extracts from HT-29 using Paxillin (Phospho-Ser178) Antibody. The lane on the right is treated with the antigen-specific peptide.



Product Modify

Phospho-Ser178