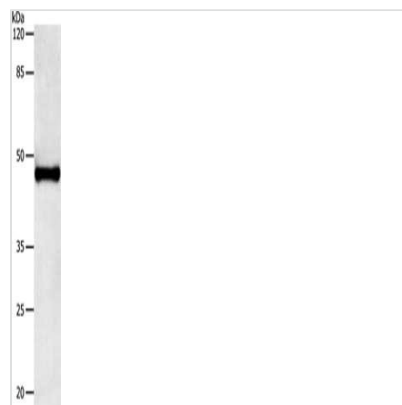




# IL11RA Antibody

|                            |  |
|----------------------------|--|
| <b>Product Code</b>        | CSB-PA049750   |
| <b>Storage</b>             | Upon receipt, store at -20°C or -80°C. Avoid repeated freeze.  |
| <b>Uniprot No.</b>         | Q14626   |
| <b>Immunogen</b>           | Fusion protein of Human IL11RA   |
| <b>Raised In</b>           | Rabbit   |
| <b>Species Reactivity</b>  | Human  |
| <b>Tested Applications</b> | ELISA,WB;ELISA:1:1000-1:5000,WB:1:500-1:2000   |
| <b>Relevance</b>           | Interleukin 11 is a stromal cell-derived cytokine that belongs to a family of pleiotropic and redundant cytokines that use the gp130 transducing subunit in their high affinity receptors. This gene encodes the IL-11 receptor, which is a member of the hematopoietic cytokine receptor family. This particular receptor is very similar to ciliary neurotrophic factor, since both contain an extracellular region with a 2-domain structure composed of an immunoglobulin-like domain and a cytokine receptor-like domain. Multiple alternatively spliced transcript variants have been found for this gene. |
| <b>Form</b>                | Liquid   |
| <b>Conjugate</b>           | Non-conjugated   |
| <b>Storage Buffer</b>      | -20°C, pH7.4 PBS, 0.05% NaN <sub>3</sub> , 40% Glycerol  |
| <b>Purification Method</b> | Antigen affinity purification  |
| <b>Isotype</b>             | IgG  |
| <b>Alias</b>               | Interleukin-11 receptor subunit alpha  |
| <b>Species</b>             | Homo sapiens (Human)   |
| <b>Target Names</b>        | IL11RA   |

## Image



Gel: 8%SDS-PAGE, Lysate: 40 µg, Lane: 293T cells, Primary antibody: CSB-PA049750(IL11RA Antibody) at dilution 1/250, Secondary antibody: Goat anti rabbit IgG at 1/8000 dilution, Exposure time: 1 minute