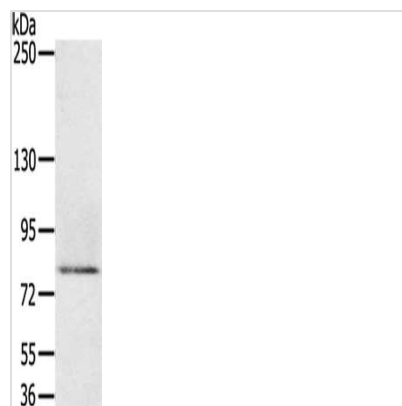




MEP1A Antibody

Product Code	CSB-PA047131
Storage	Upon receipt, store at -20°C or -80°C. Avoid repeated freeze.
Uniprot No.	Q16819
Immunogen	Fusion protein of Human MEP1A
Raised In	Rabbit
Species Reactivity	Human,Rat
Tested Applications	ELISA,WB;ELISA:1:1000-1:2000,WB:1:200-1:1000
Relevance	Meprin A subunit alpha also known as endopeptidase-2 or PABA peptide hydrolase is the alpha subunit of the meprin A enzyme that in humans is encoded by the MEP1A gene.[1][2]The MEP1A locus is on chromosome 6p in humans and on chromosome 17 in mice.The meprin alpha subunit product of the MEP1A gene is processed in the endoplasmic reticulum during intracellular transport, and is secreted as homomeric meprin A.
Form	Liquid
Conjugate	Non-conjugated
Storage Buffer	-20°C, pH7.4 PBS, 0.05% NaN3, 40% Glycerol
Purification Method	Antigen affinity purification
Isotype	IgG
Species	Homo sapiens (Human)
Target Names	MEP1A

Image



Gel: 6%SDS-PAGE, Lysate: 40 µg, Lane: Human rectum carcinoma tissue, Primary antibody: CSB-PA047131(MEP1A Antibody) at dilution 1/200, Secondary antibody: Goat anti rabbit IgG at 1/8000 dilution, Exposure time: 3 minutes