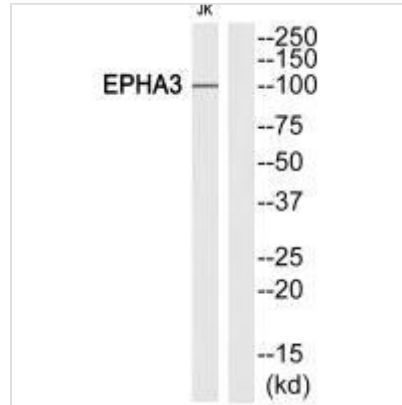




# EPHA3 (Ab-602) Antibody

<b>Product Code</b>	CSB-PA030077
<b>Storage</b>	Upon receipt, store at -20°C or -80°C. Avoid repeated freeze.
<b>Uniprot No.</b>	P29320
<b>Immunogen</b>	Synthesized peptide derived from Internal of Human EPHA3.
<b>Raised In</b>	Rabbit
<b>Species Reactivity</b>	Human,Mouse,Rat
<b>Specificity</b>	The antibody detects endogenous levels of total EPHA3 protein.
<b>Tested Applications</b>	ELISA,WB;WB:1:500-1:3000
<b>Relevance</b>	<p>Receptor tyrosine kinase which binds promiscuously membrane-bound ephrin family ligands residing on adjacent cells, leading to contact-dependent bidirectional signaling into neighboring cells. The signaling pathway downstream of the receptor is referred to as forward signaling while the signaling pathway downstream of the ephrin ligand is referred to as reverse signaling. Highly promiscuous for ephrin-A ligands it binds preferentially EFNA5. Upon activation by EFNA5 regulates cell-cell adhesion, cytoskeletal organization and cell migration. Plays a role in cardiac cells migration and differentiation and regulates the formation of the atrioventricular canal and septum during development probably through activation by EFNA1. Involved in the retinotectal mapping of neurons. May also control the segregation but not the guidance of motor and sensory axons during neuromuscular circuit development.</p> <p>Wicks I.P., Proc. Natl. Acad. Sci. U.S.A. 89:1611-1615(1992). Chiari R., Cancer Res. 60:4855-4863(2000). Boyd A.W., J. Biol. Chem. 267:3262-3267(1992).</p>
<b>Form</b>	Rabbit IgG in phosphate buffered saline (without Mg <sup>2+</sup> and Ca <sup>2+</sup> ), pH 7.4, 150mM NaCl, 0.02% sodium azide and 50% glycerol.
<b>Purification Method</b>	The antibody was affinity-purified from rabbit antiserum by affinity-chromatography using epitope-specific immunogen.
<b>Clonality</b>	Polyclonal
<b>Alias</b>	EK4; EPH receptor A3; EPH-like kinase 4; eph-like tyrosine kinase 1; EPHA3
<b>Product Type</b>	Polyclonal Antibody
<b>Species</b>	Homo sapiens (Human)
<b>Target Names</b>	EPHA3
<b>Image</b>	



Western blot analysis of extracts from Jurkat cells, using EPHA3 (Ab-602) antibody.