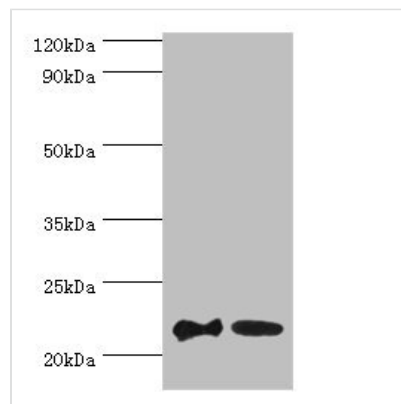




SRI Antibody

Product Code	CSB-PA022665ESR1HU
Storage	Upon receipt, store at -20°C or -80°C. Avoid repeated freeze.
Uniprot No.	P30626
Immunogen	Recombinant Human Sorcin protein (1-198AA)
Raised In	Rabbit
Species Reactivity	Human
Tested Applications	ELISA, WB, IHC; Recommended dilution: WB:1:200-1:1000, IHC:1:20-1:200
Relevance	Calcium-binding protein that modulates excitation-contraction coupling in the heart. Contributes to calcium homeostasis in the heart sarcoplasmic reticulum. Modulates the activity of RYR2 calcium channels.
Form	Liquid
Conjugate	Non-conjugated
Storage Buffer	PBS with 0.02% sodium azide, 50% glycerol, pH7.3.
Purification Method	Antigen Affinity Purified
Isotype	IgG
Clonality	Polyclonal
Alias	Sorcin (22 kDa protein) (CP-22) (CP22) (V19), SRI
Species	Human
Research Area	Signal Transduction
Target Names	SRI

Image



Western blot

All lanes: SRI antibody at 2µg/ml

Lane 1: HepG2 whole cell lysate

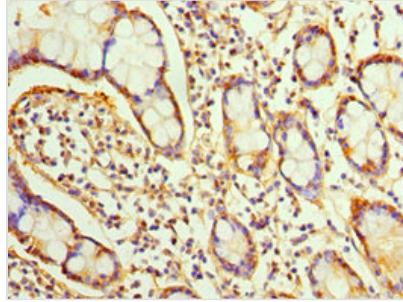
Lane 2: Hela whole cell lysate

Secondary

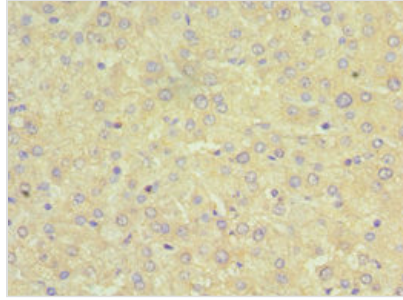
Goat polyclonal to rabbit at 1/10000 dilution

Predicted band size: 22, 21 kDa

Observed band size: 22 kDa



Immunohistochemistry of paraffin-embedded human small intestine tissue using CSB-PA022665ESR1HU at dilution of 1:100



Immunohistochemistry of paraffin-embedded human liver tissue using CSB-PA022665ESR1HU at dilution of 1:100