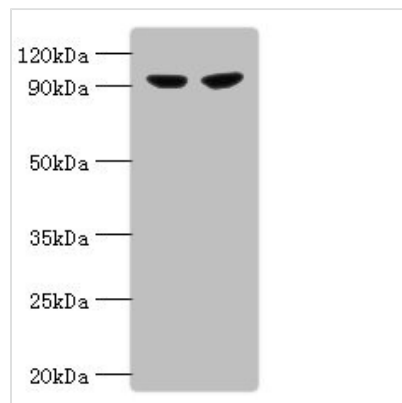




PYGL Antibody

Product Code	CSB-PA019122EA01HU
Storage	Upon receipt, store at -20°C or -80°C. Avoid repeated freeze.
Uniprot No.	P06737
Immunogen	Recombinant Human Glycogen phosphorylase, liver form protein (2-846AA)
Raised In	Rabbit
Species Reactivity	Human
Tested Applications	ELISA, WB, IHC
Relevance	Phosphorylase is an important allosteric enzyme in carbohydrate metabolism. Enzymes from different sources differ in their regulatory mechanisms and in their natural substrates. However, all known phosphorylases share catalytic and structural properties.
Form	Liquid
Conjugate	Non-conjugated
Storage Buffer	0.1mol/L NaCl, 15mmol/L NaN ₃ , PH7.2
Purification Method	Caprylic Acid Ammonium Sulfate Precipitation purified
Isotype	IgG
Clonality	Polyclonal
Alias	PYGL
Species	Homo sapiens (Human)
Research Area	Metabolism
Target Names	PYGL

Image



Western blot

All lanes: Glycogen phosphorylase, liver form antibody at 2µg/ml

Lane 1: 293T whole cell lysate

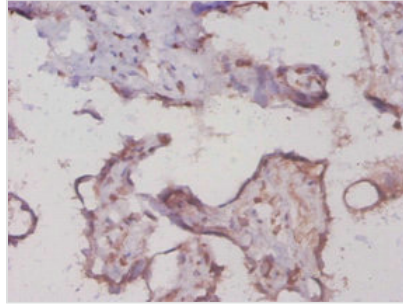
Lane 2: HepG2 whole cell lysate

Secondary

Goat polyclonal to rabbit at 1/10000 dilution

Predicted band size: 98,94 kDa

Observed band size: 97 kDa



Immunohistochemistry of paraffin-embedded human placenta using CSB-PA019122EA01HU at dilution of 1:20