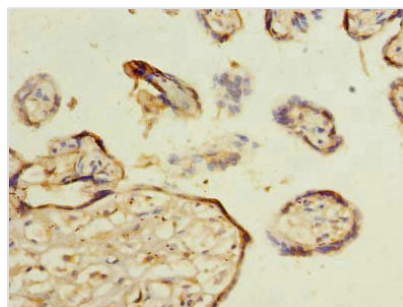




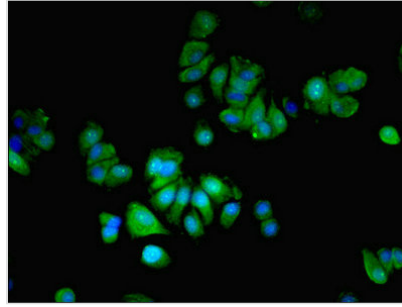
MLX Antibody

Product Code	CSB-PA014643LA01HU
Storage	Upon receipt, store at -20°C or -80°C. Avoid repeated freeze.
Uniprot No.	Q9UH92
Immunogen	Recombinant Human Max-like protein X protein (1-244AA)
Raised In	Rabbit
Species Reactivity	Human
Tested Applications	ELISA, IHC, IF; Recommended dilution: IHC:1:20-1:200, IF:1:50-1:200
Relevance	Transcription regulator. Forms a sequence-specific DNA-binding protein complex with MAD1, MAD4, MNT, WBSCR14 and MLXIP which recognizes the core sequence 5'-CACGTG-3'. The TCFL4-MAD1, TCFL4-MAD4, TCFL4-WBSCR14 complexes are transcriptional repressors. Plays a role in transcriptional activation of glycolytic target genes. Involved in glucose-responsive gene regulation.
Form	Liquid
Conjugate	Non-conjugated
Storage Buffer	Preservative: 0.03% Proclin 300 Constituents: 50% Glycerol, 0.01M PBS, PH 7.4
Purification Method	>95%, Protein G purified
Isotype	IgG
Clonality	Polyclonal
Alias	Max-like protein X (Class D basic helix-loop-helix protein 13) (bHLHd13) (Max-like bHLHZip protein) (Protein BigMax) (Transcription factor-like protein 4), MLX, BHLHD13 TCFL4
Species	Human
Research Area	Epigenetics and Nuclear Signaling
Target Names	MLX

Image



Immunohistochemistry of paraffin-embedded human placenta tissue using CSB-PA014643LA01HU at dilution of 1:100



Immunofluorescent analysis of MCF-7 cells using CSB-PA014643LA01HU at dilution of 1:100 and Alexa Fluor 488-conjugated AffiniPure Goat Anti-Rabbit IgG(H+L)