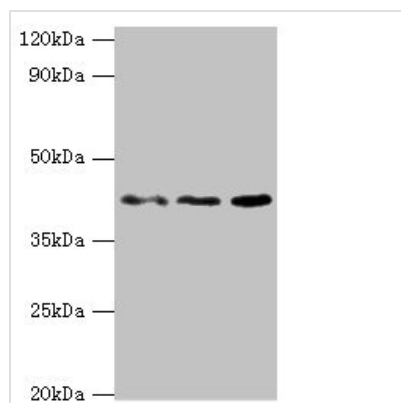




MICA Antibody

| | |
|----------------------------|--|
| Product Code | CSB-PA013806ESR1HU |
| Storage | Upon receipt, store at -20°C or -80°C. Avoid repeated freeze. |
| Uniprot No. | Q29983 |
| Immunogen | Recombinant Human MHC class I polypeptide-related sequence A protein (24-307AA) |
| Raised In | Rabbit |
| Species Reactivity | Human, Mouse |
| Tested Applications | ELISA, WB, IHC; Recommended dilution: WB:1:200-1:1000, IHC:1:20-1:200 |
| Relevance | Seems to have no role in antigen presentation. Acts as a stress-induced self-antigen that is recognized by gamma delta T-cells. Ligand for the KLRK1/NKG2D receptor. Binding to KLRK1 leads to cell lysis. |
| Form | Liquid |
| Conjugate | Non-conjugated |
| Storage Buffer | PBS with 0.02% sodium azide, 50% glycerol, pH7.3. |
| Purification Method | Antigen Affinity Purified |
| Isotype | IgG |
| Clonality | Polyclonal |
| Alias | MHC class I polypeptide-related sequence A (MIC-A), MICA, PERB11.1 |
| Species | Human |
| Research Area | Immunology |
| Target Names | MICA |

Image



Western blot

All lanes: MICA antibody at 8µg/ml

Lane 1: MCF-7 whole cell lysate

Lane 2: A431 whole cell lysate

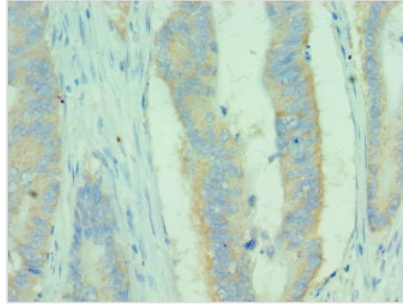
Lane 3: Mouse Stomach tissue

Secondary

Goat polyclonal to rabbit IgG at 1/10000 dilution

Predicted band size: 43, 32 kDa

Observed band size: 43 kDa



Immunohistochemistry of paraffin-embedded human colon cancer using CSB-PA013806ESR1HU at dilution of 1:100