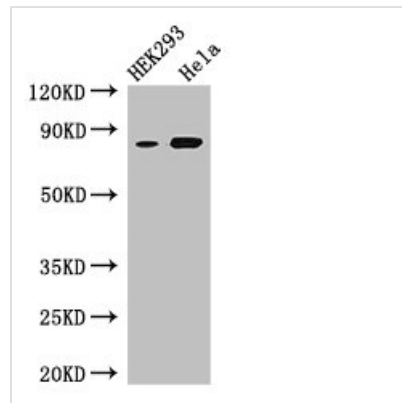




MELTF Antibody

Product Code	CSB-PA013754LA01HU
Storage	Upon receipt, store at -20°C or -80°C. Avoid repeated freeze.
Uniprot No.	P08582
Immunogen	Recombinant Human Melanotransferrin protein (20-302AA)
Raised In	Rabbit
Species Reactivity	Human
Tested Applications	ELISA, WB, IHC, IF; Recommended dilution: WB:1:500-1:5000, IHC:1:20-1:200, IF:1:50-1:200
Relevance	Involved in iron cellular uptake. Seems to be internalized and then recycled back to the cell membrane. Binds a single atom of iron per subunit. Could also bind zinc.
Form	Liquid
Conjugate	Non-conjugated
Storage Buffer	Preservative: 0.03% Proclin 300 Constituents: 50% Glycerol, 0.01M PBS, PH 7.4
Purification Method	>95%, Protein G purified
Isotype	IgG
Clonality	Polyclonal
Alias	Melanotransferrin (Melanoma-associated antigen p97) (CD antigen CD228), MELTF, MAP97 MFI2
Species	Human
Research Area	Epigenetics and Nuclear Signaling
Target Names	MELTF

Image



Western Blot

Positive WB detected in: HEK293 whole cell lysate, HeLa whole cell lysate

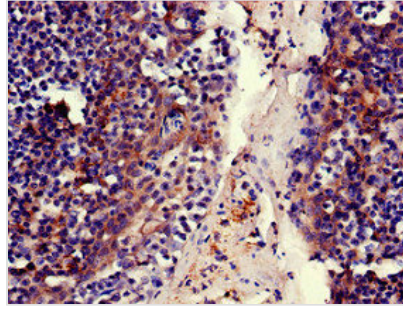
All lanes: Mfi2 antibody at 3µg/ml

Secondary

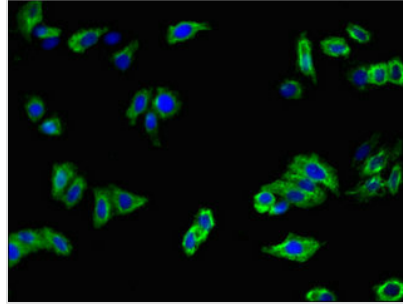
Goat polyclonal to rabbit IgG at 1/50000 dilution

Predicted band size: 81, 33 kDa

Observed band size: 81 kDa



Immunohistochemistry of paraffin-embedded human tonsil tissue using CSB-PA013754LA01HU at dilution of 1:100



Immunofluorescent analysis of HepG2 cells using CSB-PA013754LA01HU at dilution of 1:100 and Alexa Fluor 488-conjugated AffiniPure Goat Anti-Rabbit IgG(H+L)