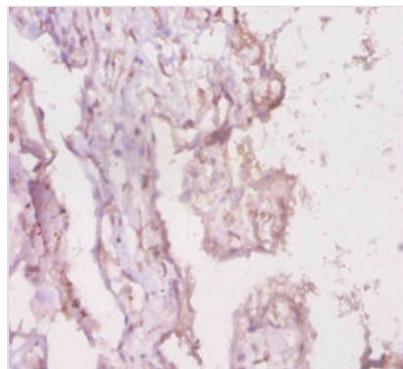




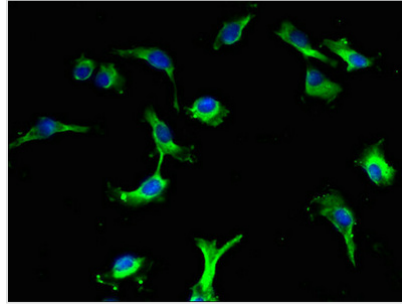
LRBA Antibody

Product Code	CSB-PA013070LA01HU
Storage	Upon receipt, store at -20°C or -80°C. Avoid repeated freeze.
Uniprot No.	P50851
Immunogen	Recombinant Human Lipopolysaccharide-responsive and beige-like anchor protein (2-252AA)
Raised In	Rabbit
Species Reactivity	Human
Tested Applications	ELISA, IHC, IF; Recommended dilution: IHC:1:20-1:200, IF:1:50-1:200
Relevance	May be involved in coupling signal transduction and vesicle trafficking to enable polarized secretion and/or membrane deposition of immune effector molecules
Form	Liquid
Conjugate	Non-conjugated
Storage Buffer	Preservative: 0.03% Proclin 300 Constituents: 50% Glycerol, 0.01M PBS, PH 7.4
Purification Method	>95%, Protein G purified
Isotype	IgG
Clonality	Polyclonal
Alias	Lipopolysaccharide-responsive and beige-like anchor protein (Beige-like protein) (CDC4-like protein), LRBA, BGL CDC4L LBA
Species	Human
Research Area	Signal Transduction
Target Names	LRBA

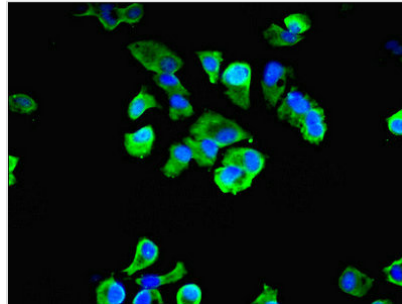
Image



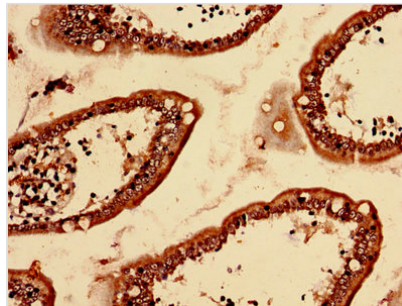
Immunohistochemistry of paraffin-embedded human placenta tissue using CSB-PA013070LA01HU at dilution of 1:20



Immunofluorescent analysis of U251 cells using CSB-PA013070LA01HU at dilution of 1:100 and Alexa Fluor 488-conjugated AffiniPure Goat Anti-Rabbit IgG(H+L)



Immunofluorescent analysis of MCF-7 cells using CSB-PA013070LA01HU at dilution of 1:100 and Alexa Fluor 488-conjugated AffiniPure Goat Anti-Rabbit IgG(H+L)



Immunohistochemistry analysis of human small intestine tissue using CSB-PA013070LA01HU at dilution of 1:100