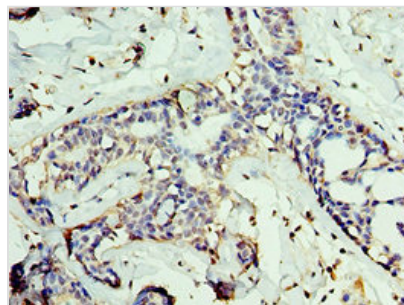




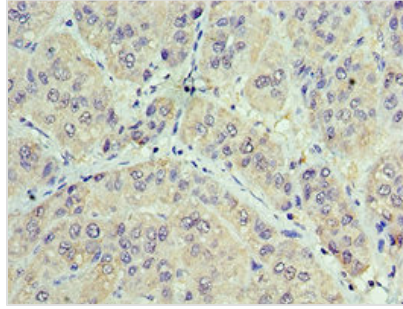
GAN Antibody

Product Code	CSB-PA009228ESR2HU
Storage	Upon receipt, store at -20°C or -80°C. Avoid repeated freeze.
Uniprot No.	Q9H2C0
Immunogen	Recombinant Human Gigaxonin protein (1-240AA)
Raised In	Rabbit
Species Reactivity	Human
Tested Applications	ELISA, IHC; Recommended dilution: IHC:1:20-1:200
Relevance	Probable cytoskeletal component that directly or indirectly plays an important role in neurofilament architecture. May act as a substrate-specific adapter of an E3 ubiquitin-protein ligase complex which mediates the ubiquitination and subsequent proteasomal degradation of target proteins. Controls degradation of TBCB. Controls degradation of MAP1B and MAP1S, and is critical for neuronal maintenance and survival.
Form	Liquid
Conjugate	Non-conjugated
Storage Buffer	PBS with 0.02% sodium azide, 50% glycerol, pH7.3.
Purification Method	Antigen Affinity Purified
Isotype	IgG
Clonality	Polyclonal
Alias	Gigaxonin (Kelch-like protein 16), GAN, GAN1 KLHL16
Species	Human
Research Area	Neuroscience
Target Names	GAN

Image



Immunohistochemistry of paraffin-embedded human breast cancer using CSB-PA009228ESR2HU at dilution of 1:100



Immunohistochemistry of paraffin-embedded human liver cancer using CSB-PA009228ESR2HU at dilution of 1:100