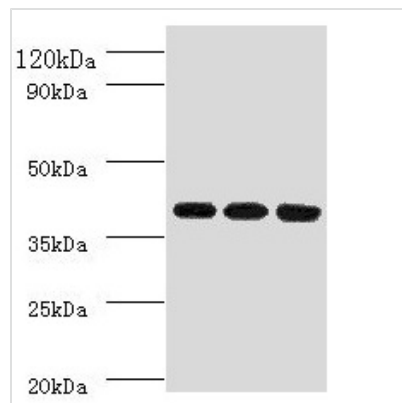




FCGRT Antibody

Product Code	CSB-PA008545EA01HU
Storage	Upon receipt, store at -20°C or -80°C. Avoid repeated freeze.
Uniprot No.	P55899
Immunogen	Recombinant Human IgG receptor FcRn large subunit p51 protein (24-297AA)
Raised In	Rabbit
Species Reactivity	Human, Mouse
Tested Applications	ELISA, WB, IHC, IF; Recommended dilution: WB:1:500-1:2000, IHC:1:20-1:1000, IF:1:50-1:200
Form	Liquid
Conjugate	Non-conjugated
Storage Buffer	Preservative: 0.03% Proclin 300 Constituents: 50% Glycerol, 0.01M PBS, PH 7.4
Purification Method	>95%, Protein G purified
Isotype	IgG
Clonality	Polyclonal
Alias	IgG receptor FcRn large subunit p51 (FcRn) (IgG Fc fragment receptor transporter alpha chain) (Neonatal Fc receptor), FCGRT, FCRN
Species	Human
Research Area	Immunology
Target Names	FCGRT

Image



Western blot

All lanes: FCGRT antibody at 2µg/ml

Lane 1: HepG2 whole cell lysate

Lane 2: Mouse liver tissue

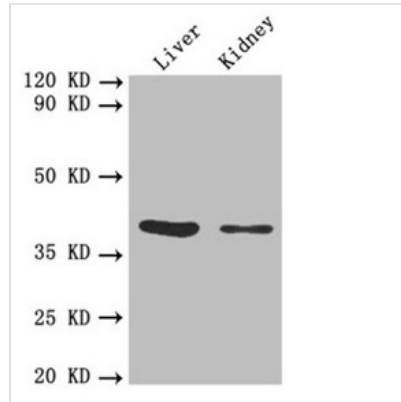
Lane 3: A549 whole cell lysate

Secondary

Goat polyclonal to rabbit IgG at 1/10000 dilution

Predicted band size: 40 kDa

Observed band size: 40 kDa



Western blot

All lanes: FCGRT antibody at 5.3µg/ml

Lane 1: Mouse liver tissue

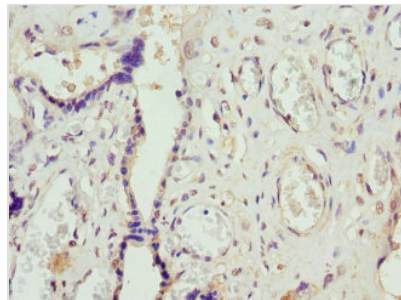
Lane 2: Mouse kidney tissue

Secondary

Goat polyclonal to rabbit IgG at 1/10000 dilution

Predicted band size: 40 kDa

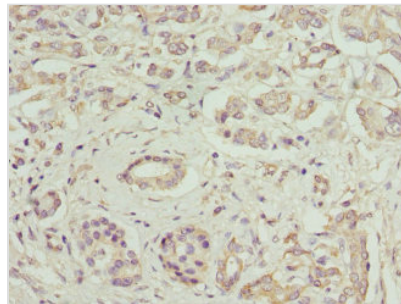
Observed band size: 40 kDa



Immunohistochemistry of paraffin-embedded

human placenta tissue using CSB-

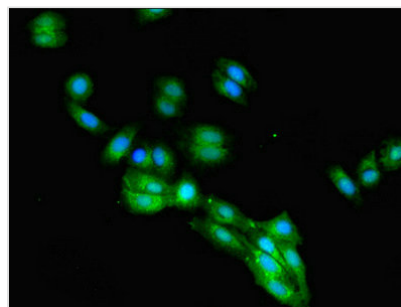
PA008545EA01HU at dilution of 1:100



Immunohistochemistry of paraffin-embedded

human pancreatic cancer using CSB-

PA008545EA01HU at dilution of 1:100

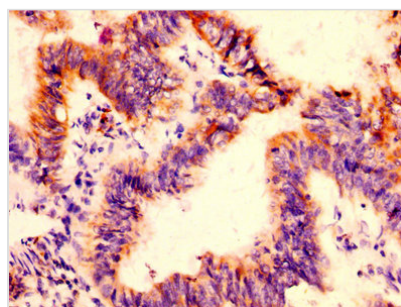


Immunofluorescent analysis of HepG2 cells

using CSB-PA008545EA01HU at dilution of

1:100 and Alexa Fluor 488-conjugated

AffiniPure Goat Anti-Rabbit IgG(H+L)



IHC image of CSB-PA008545EA01HU diluted at

1:500 and staining in paraffin-embedded human

colon cancer performed on a Leica BondTM

system. After dewaxing and hydration, antigen

retrieval was mediated by high pressure in a

citrate buffer (pH 6.0). Section was blocked with

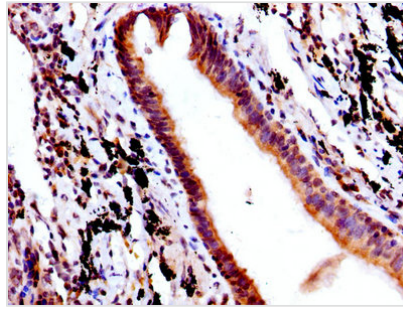
10% normal goat serum 30min at RT. Then

primary antibody (1% BSA) was incubated at

4°C overnight. The primary is detected by a

biotinylated secondary antibody and visualized

using an HRP conjugated SP system.



IHC image of CSB-PA008545EA01HU diluted at 1:500 and staining in paraffin-embedded human lung cancer performed on a Leica BondTM system. After dewaxing and hydration, antigen retrieval was mediated by high pressure in a citrate buffer (pH 6.0). Section was blocked with 10% normal goat serum 30min at RT. Then primary antibody (1% BSA) was incubated at 4°C overnight. The primary is detected by a biotinylated secondary antibody and visualized using an HRP conjugated SP system.