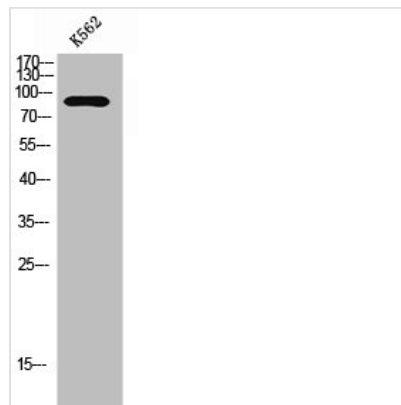




# HNRNPUL2 Antibody

<b>Product Code</b>	CSB-PA008213
<b>Storage</b>	Upon receipt, store at -20°C or -80°C. Avoid repeated freeze.
<b>Uniprot No.</b>	Q1KMD3
<b>Immunogen</b>	Synthesized peptide derived from the C-terminal region of Human SAF-A2.
<b>Raised In</b>	Rabbit
<b>Species Reactivity</b>	Human, Mouse
<b>Tested Applications</b>	WB, IHC, ELISA; WB: 1/500-1/2000. IHC: 1/100-1/300. ELISA: 1/40000
<b>Form</b>	Liquid
<b>Conjugate</b>	Non-conjugated
<b>Storage Buffer</b>	Liquid in PBS containing 50% glycerol, 0.5% BSA and 0.02% sodium azide.
<b>Purification Method</b>	The antibody was affinity-purified from rabbit antiserum by affinity-chromatography using epitope-specific immunogen.
<b>Isotype</b>	IgG
<b>Alias</b>	HNRNPUL2; HNRPUL2; Heterogeneous nuclear ribonucleoprotein U-like protein 2; Scaffold-attachment factor A2; SAF-A2
<b>Species</b>	Homo sapiens (Human)
<b>Target Names</b>	HNRNPUL2

## Image



Western Blot analysis of K562 cells using SAF-A2 Polyclonal Antibody