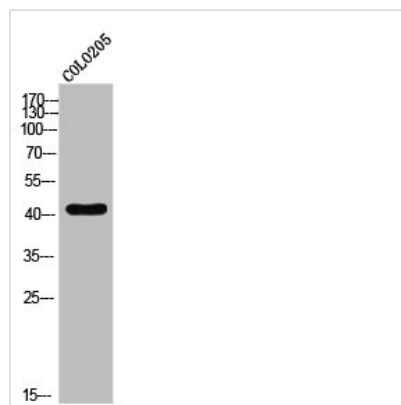




S1PR1 Antibody

Product Code	CSB-PA007898
Storage	Upon receipt, store at -20°C or -80°C. Avoid repeated freeze.
Uniprot No.	P21453
Immunogen	Synthesized peptide derived from the N-terminal region of Human EDG-1.
Raised In	Rabbit
Species Reactivity	Human
Tested Applications	WB,IHC,IF,ELISA;WB:1/500-1/2000.IHC:1/100-1/300.IF:1/200-1/1000.ELISA:1/20000
Form	Liquid
Conjugate	Non-conjugated
Storage Buffer	Liquid in PBS containing 50% glycerol, 0.5% BSA and 0.02% sodium azide.
Purification Method	The antibody was affinity-purified from rabbit antiserum by affinity-chromatography using epitope-specific immunogen.
Isotype	IgG
Alias	S1PR1; CHEDG1; EDG1; Sphingosine 1-phosphate receptor 1; S1P receptor 1; S1P1; Endothelial differentiation G-protein coupled receptor 1; Sphingosine 1-phosphate receptor Edg-1; S1P receptor Edg-1; CD antigen CD363
Species	Homo sapiens (Human)
Target Names	S1PR1

Image



Western Blot analysis of COLO205 cells using EDG-1 Polyclonal Antibody