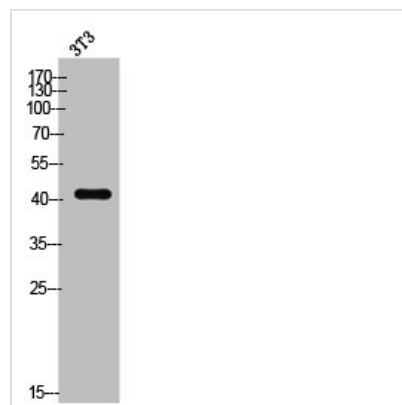




AGER Antibody

| | |
|----------------------------|---|
| Product Code | CSB-PA007810 |
| Storage | Upon receipt, store at -20°C or -80°C. Avoid repeated freeze. |
| Uniprot No. | Q15109 |
| Immunogen | Synthesized peptide derived from the Internal region of Human RAGE. |
| Raised In | Rabbit |
| Species Reactivity | Human |
| Tested Applications | WB,IHC,ELISA;WB:1/500-1/2000.IHC:1/100-1/300.ELISA:1/20000 |
| Form | Liquid |
| Conjugate | Non-conjugated |
| Storage Buffer | Liquid in PBS containing 50% glycerol, 0.5% BSA and 0.02% sodium azide. |
| Purification Method | The antibody was affinity-purified from rabbit antiserum by affinity-chromatography using epitope-specific immunogen. |
| Isotype | IgG |
| Alias | AGER; RAGE; Advanced glycosylation end product-specific receptor; Receptor for advanced glycosylation end products |
| Species | Homo sapiens (Human) |
| Target Names | AGER |

Image



Western Blot analysis of 3T3 cells using RAGE Polyclonal Antibody