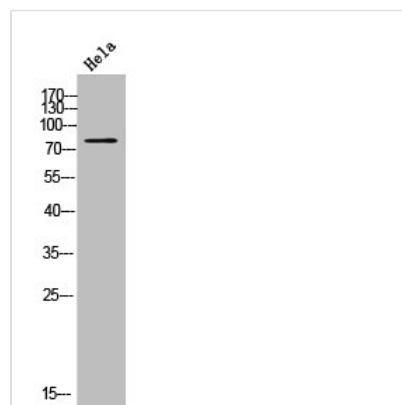




CYP21A2 Antibody

Product Code	CSB-PA007610
Storage	Upon receipt, store at -20°C or -80°C. Avoid repeated freeze.
Uniprot No.	P08686
Immunogen	Synthesized peptide derived from the Internal region of Human CYP21A2.
Raised In	Rabbit
Species Reactivity	Human
Tested Applications	WB,ELISA;WB:1/500-1/2000.ELISA:1/40000
Form	Liquid
Conjugate	Non-conjugated
Storage Buffer	Liquid in PBS containing 50% glycerol, 0.5% BSA and 0.02% sodium azide.
Purification Method	The antibody was affinity-purified from rabbit antiserum by affinity-chromatography using epitope-specific immunogen.
Isotype	IgG
Alias	CYP21A2; CYP21; CYP21B; Steroid 21-hydroxylase; 21-OHase; Cytochrome P-450c21; Cytochrome P450 21; Cytochrome P450 XXI; Cytochrome P450-C21; Cytochrome P450-C21B
Species	Homo sapiens (Human)
Target Names	CYP21A2

Image



Western Blot analysis of HELA cells using CYP21A2 Polyclonal Antibody