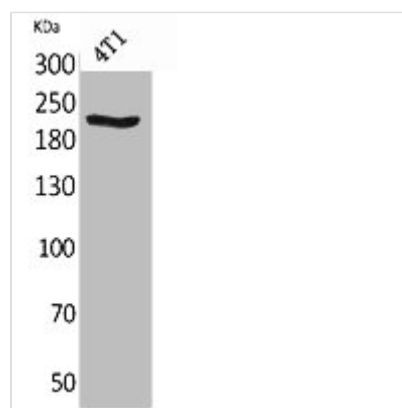




MYH1/MYH2/MYH3/MYH4/MYH6/MYH7/MYH8 Antibody

Product Code	CSB-PA005730
Storage	Upon receipt, store at -20°C or -80°C. Avoid repeated freeze.
Uniprot No.	P12882/Q9UKX2/P11055/Q9Y623/P13533/P12883/P13535
Immunogen	Synthesized peptide derived from Human MYH-pan around the non-acetylation site of K1394.
Raised In	Rabbit
Species Reactivity	Human,Mouse,Rat
Tested Applications	WB,ELISA;WB:1/500-1/2000.ELISA:1/20000
Form	Liquid
Conjugate	Non-conjugated
Storage Buffer	Liquid in PBS containing 50% glycerol, 0.5% BSA and 0.02% sodium azide.
Purification Method	The antibody was affinity-purified from rabbit antiserum by affinity-chromatography using epitope-specific immunogen.
Isotype	IgG
Alias	MYH1; Myosin-1; Myosin heavy chain 1; Myosin heavy chain 2x; MyHC-2x; Myosin heavy chain IIx/d; MyHC-IIx/d; Myosin heavy chain, skeletal muscle, adult 1; MYH2; MYHSA2; Myosin-2; Myosin heavy chain 2
Target Names	MYH1/MYH2/MYH3/MYH4/MYH6/MYH7/MYH8

Image



Western Blot analysis of 4T1 cells using MYH-pan Polyclonal Antibody.