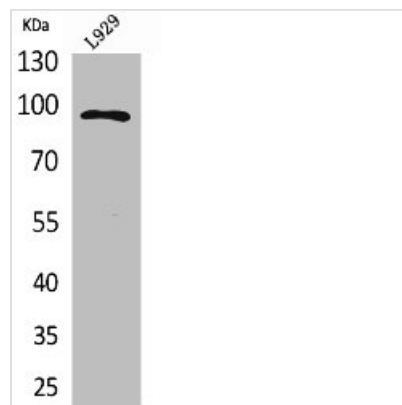




MACC1 Antibody

Product Code	CSB-PA005341
Storage	Upon receipt, store at -20°C or -80°C. Avoid repeated freeze.
Uniprot No.	Q6ZN28
Immunogen	Synthesized peptide derived from the Internal region of Human MACC1.
Raised In	Rabbit
Species Reactivity	Human, Mouse
Tested Applications	WB, ELISA; WB: 1/500-1/2000. ELISA: 1/20000
Form	Liquid
Conjugate	Non-conjugated
Storage Buffer	Liquid in PBS containing 50% glycerol, 0.5% BSA and 0.02% sodium azide.
Purification Method	The antibody was affinity-purified from rabbit antiserum by affinity-chromatography using epitope-specific immunogen.
Isotype	IgG
Alias	MACC1; Metastasis-associated in colon cancer protein 1; SH3 domain-containing protein 7a5
Species	Homo sapiens (Human)
Target Names	MACC1

Image



Western Blot analysis of L929 cells using MACC1 Polyclonal Antibody