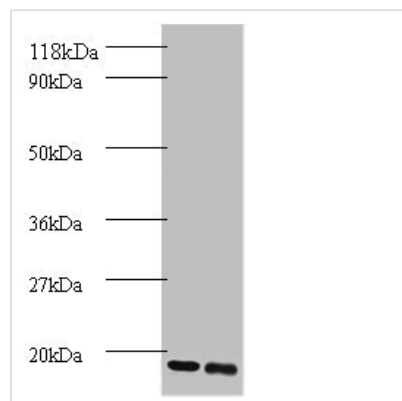




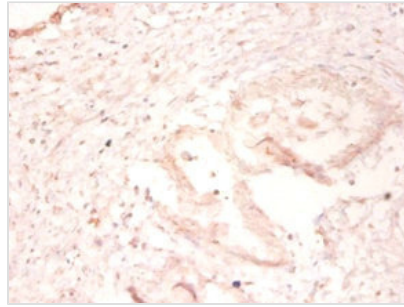
UBE2I Antibody

Product Code	CSB-PA00474A0Rb
Storage	Upon receipt, store at -20°C or -80°C. Avoid repeated freeze.
Uniprot No.	P63279
Immunogen	Recombinant Human SUMO-conjugating enzyme UBC9 protein (1-157AA)
Raised In	Rabbit
Species Reactivity	Human
Tested Applications	ELISA, WB, IHC; Recommended dilution: WB:1:1000-1:5000, IHC:1:20-1:200
Relevance	Accepts the ubiquitin-like proteins SUMO1, SUMO2, SUMO3 and SUMO4 from the UBLE1A-UBLE1B E1 complex and catalyzes their covalent attachment to other proteins with the help of an E3 ligase such as RANBP2 or CBX4. Necessary for sumoylation of FOXL2 and KAT5. Essential for nuclear architecture and chromosome segregation
Form	Liquid
Conjugate	Non-conjugated
Storage Buffer	Preservative: 0.03% Proclin 300 Constituents: 50% Glycerol, 0.01M PBS, PH 7.4
Purification Method	>95%, Protein G purified
Isotype	IgG
Clonality	Polyclonal
Alias	SUMO-conjugating enzyme UBC9 (EC 2.3.2.-) (RING-type E3 SUMO transferase UBC9) (SUMO-protein ligase) (Ubiquitin carrier protein 9) (Ubiquitin carrier protein I) (Ubiquitin-conjugating enzyme E2 I) (Ubiquitin-protein ligase I) (p18), UBE2I, UBC9 UBCE9
Species	Human
Research Area	Others
Target Names	UBE2I

Image



Western blot
 All lanes: SUMO-conjugating enzyme UBC9 antibody at 2µg/ml
 Lane 1: 293T whole cell lysate
 Lane 2: EC109 whole cell lysate
 Secondary
 Goat polyclonal to Rabbit IgG at 1/15000 dilution
 Predicted band size: 17.4 kDa
 Observed band size: 17.4 kDa



Immunohistochemistry of paraffin-embedded human prostate tissue using CSB-PA00474A0Rb at dilution of 1:50