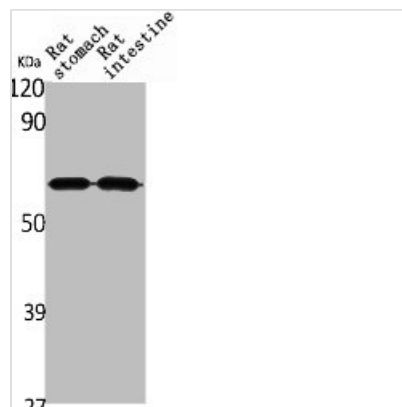




# ANGPTL1 Antibody

<b>Product Code</b>	CSB-PA004656
<b>Storage</b>	Upon receipt, store at -20°C or -80°C. Avoid repeated freeze.
<b>Uniprot No.</b>	O95841
<b>Immunogen</b>	Synthesized peptide derived from the N-terminal region of Human Angptl1.
<b>Raised In</b>	Rabbit
<b>Species Reactivity</b>	Human,Mouse,Rat
<b>Tested Applications</b>	WB,ELISA;WB:1/500-1/2000.ELISA:1/5000
<b>Form</b>	Liquid
<b>Conjugate</b>	Non-conjugated
<b>Storage Buffer</b>	Liquid in PBS containing 50% glycerol, 0.5% BSA and 0.02% sodium azide.
<b>Purification Method</b>	The antibody was affinity-purified from rabbit antiserum by affinity-chromatography using epitope-specific immunogen.
<b>Isotype</b>	IgG
<b>Alias</b>	ANGPTL1; ANG3; ANGPT3; ARP1; PSEC0154; Angiopoietin-related protein 1; Angiopoietin-3; ANG-3; Angiopoietin-like protein 1
<b>Species</b>	Homo sapiens (Human)
<b>Target Names</b>	ANGPTL1

## Image



Western Blot analysis of rat stomach rat intestines cells using Angptl1 Polyclonal Antibody