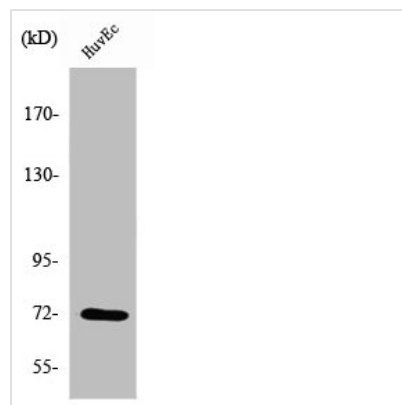




# PTPN11 Antibody

<b>Product Code</b>	CSB-PA004088
<b>Storage</b>	Upon receipt, store at -20°C or -80°C. Avoid repeated freeze.
<b>Uniprot No.</b>	Q06124
<b>Immunogen</b>	Synthesized peptide derived from Human SH-PTP2 around the non-phosphorylation site of Y542.
<b>Raised In</b>	Rabbit
<b>Species Reactivity</b>	Human,Mouse,Rat
<b>Tested Applications</b>	WB,IHC,ELISA;WB:1/500-1/2000.IHC:1/100-1/300.ELISA:1/40000
<b>Form</b>	Liquid
<b>Conjugate</b>	Non-conjugated
<b>Storage Buffer</b>	Liquid in PBS containing 50% glycerol, 0.5% BSA and 0.02% sodium azide.
<b>Purification Method</b>	The antibody was affinity-purified from rabbit antiserum by affinity-chromatography using epitope-specific immunogen.
<b>Isotype</b>	IgG
<b>Alias</b>	PTPN11; PTP2C; SHPTP2; Tyrosine-protein phosphatase non-receptor type 11; Protein-tyrosine phosphatase 1D; PTP-1D; Protein-tyrosine phosphatase 2C; PTP-2C; SH-PTP2; SHP-2; Shp2; SH-PTP3
<b>Species</b>	Homo sapiens (Human)
<b>Target Names</b>	PTPN11

## Image



Western Blot analysis of HuvEc cells using SH-PTP2 Polyclonal Antibody