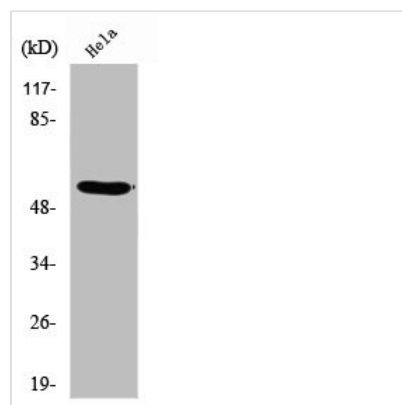




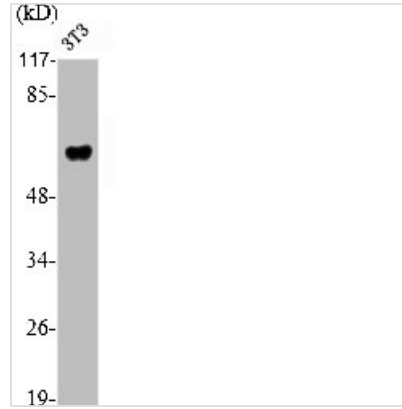
RUNX2 Antibody

Product Code	CSB-PA004038
Storage	Upon receipt, store at -20°C or -80°C. Avoid repeated freeze.
Uniprot No.	Q13950
Immunogen	Synthesized peptide derived from the Internal region of Human RUNX2.
Raised In	Rabbit
Species Reactivity	Human, Mouse
Tested Applications	WB, IHC, ELISA; WB: 1/500-1/2000. IHC: 1/100-1/300. ELISA: 1/10000
Form	Liquid
Conjugate	Non-conjugated
Storage Buffer	Liquid in PBS containing 50% glycerol, 0.5% BSA and 0.02% sodium azide.
Purification Method	The antibody was affinity-purified from rabbit antiserum by affinity-chromatography using epitope-specific immunogen.
Isotype	IgG
Alias	RUNX2; AML3; CBFA1; OSF2; PEBP2A; Runt-related transcription factor 2; Acute myeloid leukemia 3 protein; Core-binding factor subunit alpha-1; CBF-alpha-1; Oncogene AML-3; Osteoblast-specific transcription factor 2; OSF-2; Polyomavirus enhan
Species	Homo sapiens (Human)
Target Names	RUNX2

Image



Western Blot analysis of HeLa cells using RUNX2 Polyclonal Antibody



Western Blot analysis of NIH-3T3 cells using RUNX2 Polyclonal Antibody