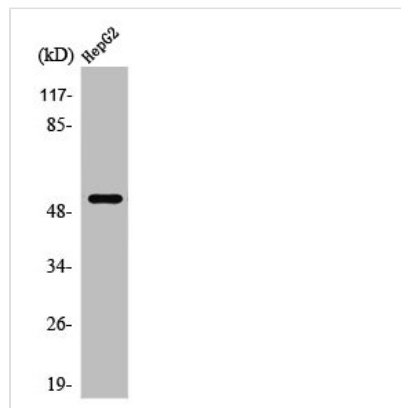




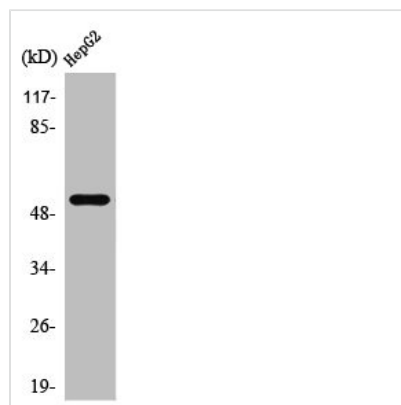
PRPH Antibody

Product Code	CSB-PA003858
Storage	Upon receipt, store at -20°C or -80°C. Avoid repeated freeze.
Uniprot No.	P41219
Immunogen	Synthesized peptide derived from the C-terminal region of Human PRPH.
Raised In	Rabbit
Species Reactivity	Human,Rat
Tested Applications	WB,IHC,ELISA;WB:1/500-1/2000.IHC:1/100-1/300.ELISA:1/20000
Form	Liquid
Conjugate	Non-conjugated
Storage Buffer	Liquid in PBS containing 50% glycerol, 0.5% BSA and 0.02% sodium azide.
Purification Method	The antibody was affinity-purified from rabbit antiserum by affinity-chromatography using epitope-specific immunogen.
Isotype	IgG
Alias	PRPH; NEF4; PRPH1; Peripherin; Neurofilament 4
Species	Homo sapiens (Human)
Target Names	PRPH

Image



Western Blot analysis of HepG2 cells using PRPH Polyclonal Antibody



Western Blot analysis of HepG2 cells using PRPH Polyclonal Antibody

