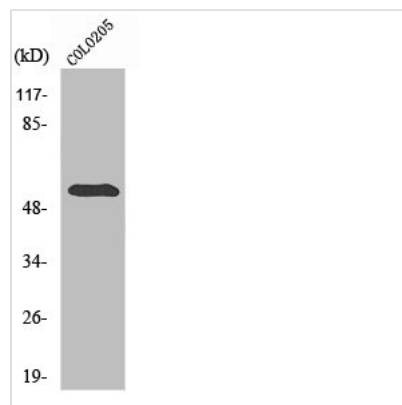




STEAP3 Antibody

Product Code	CSB-PA003760
Storage	Upon receipt, store at -20°C or -80°C. Avoid repeated freeze.
Uniprot No.	Q658P3
Immunogen	Synthesized peptide derived from the C-terminal region of Human pHyde.
Raised In	Rabbit
Species Reactivity	Human,Mouse,Rat
Tested Applications	WB,IHC,IF,ELISA;WB:1/500-1/2000.IHC:1/100-1/300.IF:1/200-1/1000.ELISA:1/10000
Form	Liquid
Conjugate	Non-conjugated
Storage Buffer	Liquid in PBS containing 50% glycerol, 0.5% BSA and 0.02% sodium azide.
Purification Method	The antibody was affinity-purified from rabbit antiserum by affinity-chromatography using epitope-specific immunogen.
Isotype	IgG
Alias	STEAP3; TSAP6; Metalloreductase STEAP3; Dudulin-2; Six-transmembrane epithelial antigen of prostate 3; Tumor suppressor-activated pathway protein 6; hTSAP6; pHyde; hpHyde
Species	Homo sapiens (Human)
Target Names	STEAP3

Image



Western Blot analysis of COLO205 cells using pHyde Polyclonal Antibody