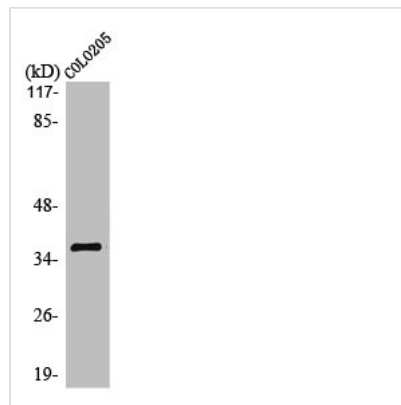




OR10G6 Antibody

| | |
|----------------------------|---|
| Product Code | CSB-PA003517 |
| Storage | Upon receipt, store at -20°C or -80°C. Avoid repeated freeze. |
| Uniprot No. | Q8NH81 |
| Immunogen | Synthesized peptide derived from the C-terminal region of Human Olfactory receptor 10G6. |
| Raised In | Rabbit |
| Species Reactivity | Human |
| Tested Applications | WB,IF,ELISA;WB:1/500-1/2000.IF:1/200-1/1000.ELISA:1/10000 |
| Form | Liquid |
| Conjugate | Non-conjugated |
| Storage Buffer | Liquid in PBS containing 50% glycerol, 0.5% BSA and 0.02% sodium azide. |
| Purification Method | The antibody was affinity-purified from rabbit antiserum by affinity-chromatography using epitope-specific immunogen. |
| Isotype | IgG |
| Alias | OR10G6; OR10G6P; Olfactory receptor 10G6; Olfactory receptor OR11-280 |
| Species | Homo sapiens (Human) |
| Target Names | OR10G6 |

Image



Western Blot analysis of COLO205 cells using Olfactory receptor 10G6 Polyclonal Antibody