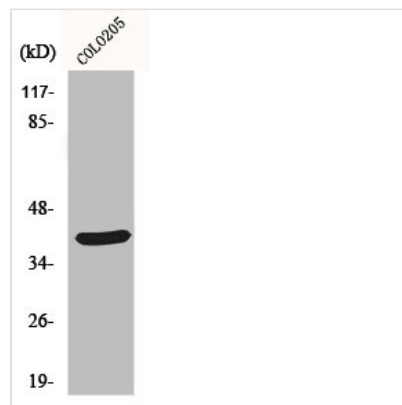




YBX2 Antibody

Product Code	CSB-PA003328
Storage	Upon receipt, store at -20°C or -80°C. Avoid repeated freeze.
Uniprot No.	Q9Y2T7
Immunogen	Synthesized peptide derived from the C-terminal region of Human MSY2.
Raised In	Rabbit
Species Reactivity	Human, Mouse
Tested Applications	WB, IHC, IF, ELISA; WB: 1/500-1/2000. IHC: 1/100-1/300. IF: 1/200-1/1000. ELISA: 1/10000
Form	Liquid
Conjugate	Non-conjugated
Storage Buffer	Liquid in PBS containing 50% glycerol, 0.5% BSA and 0.02% sodium azide.
Purification Method	The antibody was affinity-purified from rabbit antiserum by affinity-chromatography using epitope-specific immunogen.
Isotype	IgG
Alias	YBX2; CSDA3; MSY2; Y-box-binding protein 2; Contrin; DNA-binding protein C; Dbpc; Germ cell-specific Y-box-binding protein; MSY2 homolog
Species	Homo sapiens (Human)
Target Names	YBX2

Image



Western Blot analysis of COLO205 cells using MSY2 Polyclonal Antibody