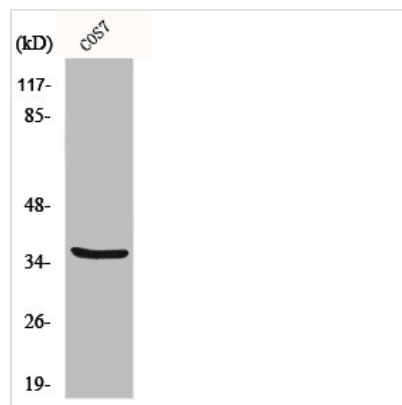




MRPL44 Antibody

| | |
|----------------------------|---|
| Product Code | CSB-PA003298 |
| Storage | Upon receipt, store at -20°C or -80°C. Avoid repeated freeze. |
| Uniprot No. | Q9H9J2 |
| Immunogen | Synthesized peptide derived from the Internal region of Human MRP-L44. |
| Raised In | Rabbit |
| Species Reactivity | Human,Mouse,Rat,Monkey |
| Tested Applications | WB,IHC,IF,ELISA;WB:1/500-1/2000.IHC:1/100-1/300.IF:1/200-1/1000.ELISA:1/40000 |
| Form | Liquid |
| Conjugate | Non-conjugated |
| Storage Buffer | Liquid in PBS containing 50% glycerol, 0.5% BSA and 0.02% sodium azide. |
| Purification Method | The antibody was affinity-purified from rabbit antiserum by affinity-chromatography using epitope-specific immunogen. |
| Isotype | IgG |
| Alias | MRPL44; 39S ribosomal protein L44; mitochondrial; L44mt; MRP-L44 |
| Species | Homo sapiens (Human) |
| Target Names | MRPL44 |

Image



Western Blot analysis of COS7 cells using MRP-L44 Polyclonal Antibody