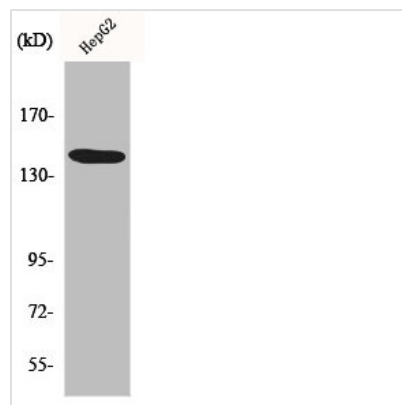




MET Antibody

Product Code	CSB-PA003233
Storage	Upon receipt, store at -20°C or -80°C. Avoid repeated freeze.
Uniprot No.	P08581
Immunogen	Synthesized peptide derived from Human Met around the non-phosphorylation site of Y1349.
Raised In	Rabbit
Species Reactivity	Human,Mouse,Rat
Tested Applications	WB,IF,ELISA;WB:1/500-1/2000.IF:1/200-1/1000.ELISA:1/10000
Form	Liquid
Conjugate	Non-conjugated
Storage Buffer	Liquid in PBS containing 50% glycerol, 0.5% BSA and 0.02% sodium azide.
Purification Method	The antibody was affinity-purified from rabbit antiserum by affinity-chromatography using epitope-specific immunogen.
Isotype	IgG
Alias	MET; Hepatocyte growth factor receptor; HGF receptor; HGF/SF receptor; Proto-oncogene c-Met; Scatter factor receptor; SF receptor; Tyrosine-protein kinase Met
Species	Homo sapiens (Human)
Target Names	MET

Image



Western Blot analysis of HepG2 cells using Met Polyclonal Antibody