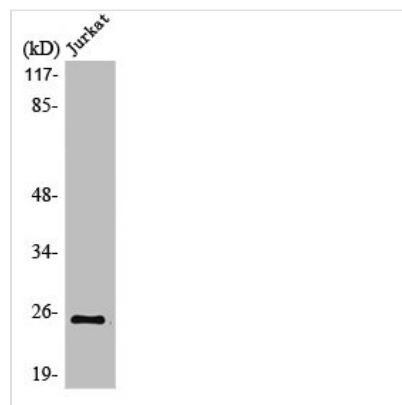




MDFI Antibody

Product Code	CSB-PA003210
Storage	Upon receipt, store at -20°C or -80°C. Avoid repeated freeze.
Uniprot No.	Q99750
Immunogen	Synthesized peptide derived from the Internal region of Human MDFI.
Raised In	Rabbit
Species Reactivity	Human,Mouse
Tested Applications	WB,ELISA;WB:1/500-1/2000.ELISA:1/10000
Form	Liquid
Conjugate	Non-conjugated
Storage Buffer	Liquid in PBS containing 50% glycerol, 0.5% BSA and 0.02% sodium azide.
Purification Method	The antibody was affinity-purified from rabbit antiserum by affinity-chromatography using epitope-specific immunogen.
Isotype	IgG
Alias	MDFI; MyoD family inhibitor; Myogenic repressor I-mf
Species	Homo sapiens (Human)
Target Names	MDFI

Image



Western Blot analysis of Jurkat cells using MDFI Polyclonal Antibody