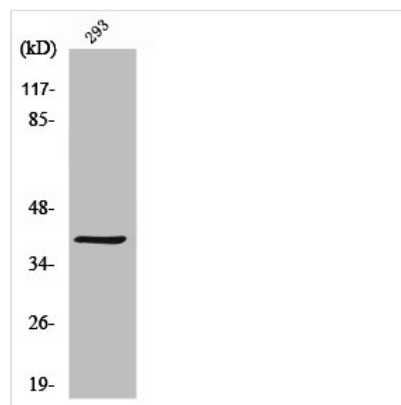




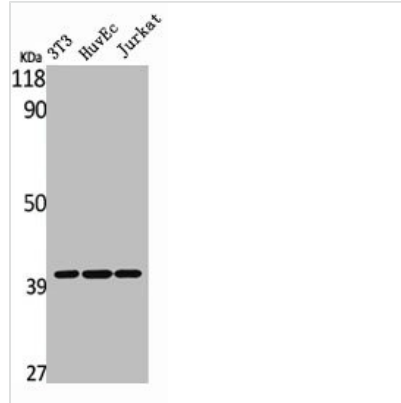
# MAGEC2 Antibody

<b>Product Code</b>	CSB-PA003187
<b>Storage</b>	Upon receipt, store at -20°C or -80°C. Avoid repeated freeze.
<b>Uniprot No.</b>	Q9UBF1
<b>Immunogen</b>	Synthesized peptide derived from the Internal region of Human MAGE-C2.
<b>Raised In</b>	Rabbit
<b>Species Reactivity</b>	Human
<b>Tested Applications</b>	WB,ELISA;WB:1/500-1/2000.ELISA:1/5000
<b>Form</b>	Liquid
<b>Conjugate</b>	Non-conjugated
<b>Storage Buffer</b>	Liquid in PBS containing 50% glycerol, 0.5% BSA and 0.02% sodium azide.
<b>Purification Method</b>	The antibody was affinity-purified from rabbit antiserum by affinity-chromatography using epitope-specific immunogen.
<b>Isotype</b>	IgG
<b>Alias</b>	MAGEC2; HCA587; MAGEE1; Melanoma-associated antigen C2; Cancer/testis antigen 10; CT10; Hepatocellular carcinoma-associated antigen 587; MAGE-C2 antigen; MAGE-E1 antigen
<b>Species</b>	Homo sapiens (Human)
<b>Target Names</b>	MAGEC2

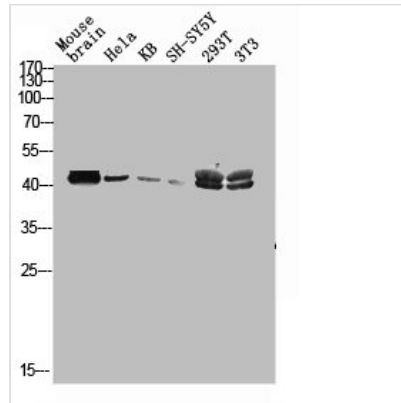
## Image



Western Blot analysis of 293 cells using MAGE-C2 Polyclonal Antibody



Western Blot analysis of NIH-3T3 HuvEc Jurkat cells using MAGE-C2 Polyclonal Antibody



Western blot analysis of mouse-brain HELA KB SH-SY5Y 293T 3T3 lysis using MAGE-C2 antibody.