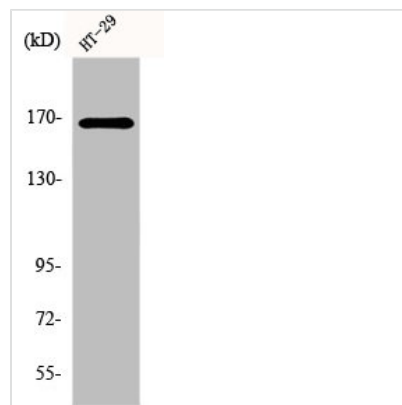




# FANCD2 Antibody

<b>Product Code</b>	CSB-PA002480
<b>Storage</b>	Upon receipt, store at -20°C or -80°C. Avoid repeated freeze.
<b>Uniprot No.</b>	Q9BXW9
<b>Immunogen</b>	Synthesized peptide derived from Human FANCD2 around the non-phosphorylation site of S222.
<b>Raised In</b>	Rabbit
<b>Species Reactivity</b>	Human, Mouse, Rat
<b>Tested Applications</b>	WB, IHC, ELISA; WB: 1/500-1/2000. IHC: 1/100-1/300. ELISA: 1/10000
<b>Form</b>	Liquid
<b>Conjugate</b>	Non-conjugated
<b>Storage Buffer</b>	Liquid in PBS containing 50% glycerol, 0.5% BSA and 0.02% sodium azide.
<b>Purification Method</b>	The antibody was affinity-purified from rabbit antiserum by affinity-chromatography using epitope-specific immunogen.
<b>Isotype</b>	IgG
<b>Alias</b>	FANCD2; FACD; Fanconi anemia group D2 protein; Protein FACD2
<b>Species</b>	Homo sapiens (Human)
<b>Target Names</b>	FANCD2

## Image



Western Blot analysis of HT29 cells using FANCD2 Polyclonal Antibody