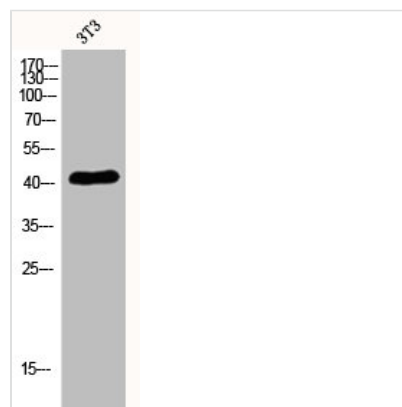




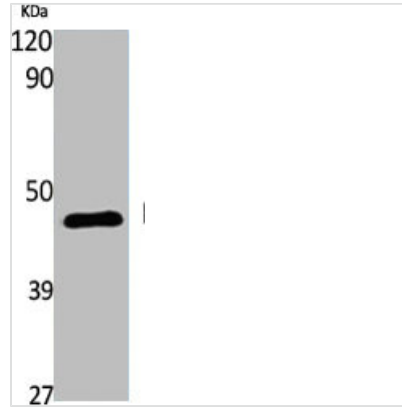
# S1PR4 Antibody

<b>Product Code</b>	CSB-PA002254
<b>Storage</b>	Upon receipt, store at -20°C or -80°C. Avoid repeated freeze.
<b>Uniprot No.</b>	O95977
<b>Immunogen</b>	Synthesized peptide derived from the C-terminal region of Human EDG-6.
<b>Raised In</b>	Rabbit
<b>Species Reactivity</b>	Human, Mouse
<b>Tested Applications</b>	WB, IF, ELISA; WB: 1/500-1/2000. IF: 1/200-1/1000. ELISA: 1/20000
<b>Form</b>	Liquid
<b>Conjugate</b>	Non-conjugated
<b>Storage Buffer</b>	Liquid in PBS containing 50% glycerol, 0.5% BSA and 0.02% sodium azide.
<b>Purification Method</b>	The antibody was affinity-purified from rabbit antiserum by affinity-chromatography using epitope-specific immunogen.
<b>Isotype</b>	IgG
<b>Alias</b>	S1PR4; EDG6; Sphingosine 1-phosphate receptor 4; S1P receptor 4; S1P4; Endothelial differentiation G-protein coupled receptor 6; Sphingosine 1-phosphate receptor Edg-6; S1P receptor Edg-6
<b>Species</b>	Homo sapiens (Human)
<b>Target Names</b>	S1PR4

## Image



Western Blot analysis of 3T3 cells using EDG-6 Polyclonal Antibody



Western Blot analysis of various cells using EDG-6 Polyclonal Antibody