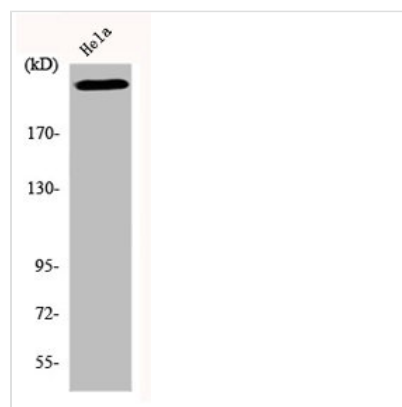




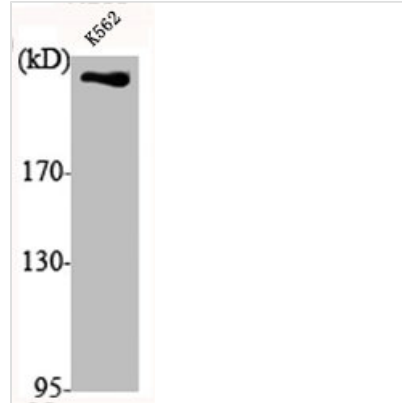
PRKDC Antibody

Product Code	CSB-PA002177
Storage	Upon receipt, store at -20°C or -80°C. Avoid repeated freeze.
Uniprot No.	P78527
Immunogen	Synthesized peptide derived from the C-terminal region of Human DNA-PKCS.
Raised In	Rabbit
Species Reactivity	Human, Mouse
Tested Applications	WB, IHC, IF, ELISA; WB: 1/500-1/2000. IHC: 1/100-1/300. IF: 1/200-1/1000. ELISA: 1/20000
Form	Liquid
Conjugate	Non-conjugated
Storage Buffer	Liquid in PBS containing 50% glycerol, 0.5% BSA and 0.02% sodium azide.
Purification Method	The antibody was affinity-purified from rabbit antiserum by affinity-chromatography using epitope-specific immunogen.
Isotype	IgG
Alias	PRKDC; HYRC; HYRC1; DNA-dependent protein kinase catalytic subunit; DNA-PK catalytic subunit; DNA-PKcs; DNP1; p460
Species	Homo sapiens (Human)
Target Names	PRKDC

Image



Western Blot analysis of HeLa cells using DNA-PKCS Polyclonal Antibody



Western Blot analysis of K562 cells using DNA-PKCS Polyclonal Antibody