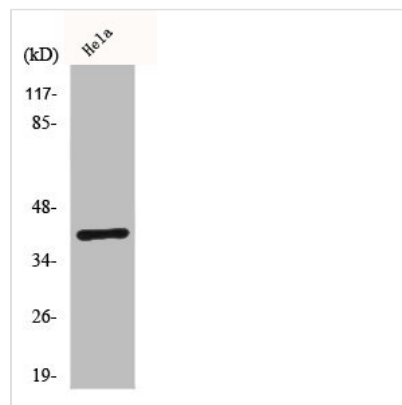




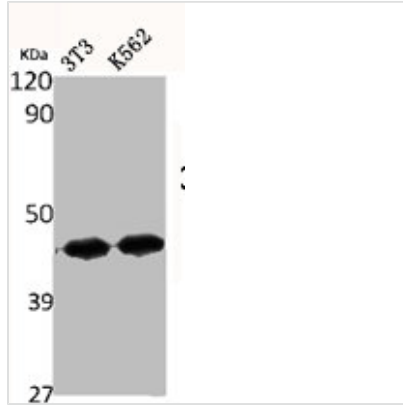
CMKLR1 Antibody

Product Code	CSB-PA001620
Storage	Upon receipt, store at -20°C or -80°C. Avoid repeated freeze.
Uniprot No.	Q99788
Immunogen	Synthesized peptide derived from the Internal region of Human ChemR23.
Raised In	Rabbit
Species Reactivity	Human,Mouse,Rat
Tested Applications	WB,IHC,IF,ELISA;WB:1/500-1/2000.IHC:1/100-1/300.IF:1/200-1/1000.ELISA:1/20000
Form	Liquid
Conjugate	Non-conjugated
Storage Buffer	Liquid in PBS containing 50% glycerol, 0.5% BSA and 0.02% sodium azide.
Purification Method	The antibody was affinity-purified from rabbit antiserum by affinity-chromatography using epitope-specific immunogen.
Isotype	IgG
Alias	CMKLR1; CHEMR23; DEZ; Chemokine-like receptor 1; G-protein coupled receptor ChemR23; G-protein coupled receptor DEZ
Target Names	CMKLR1

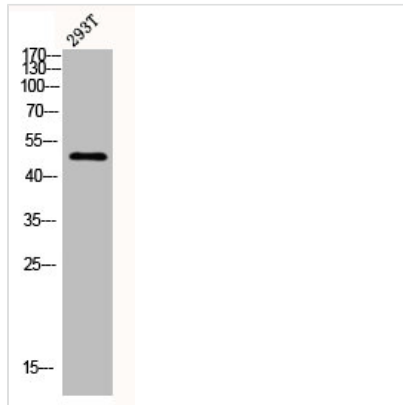
Image



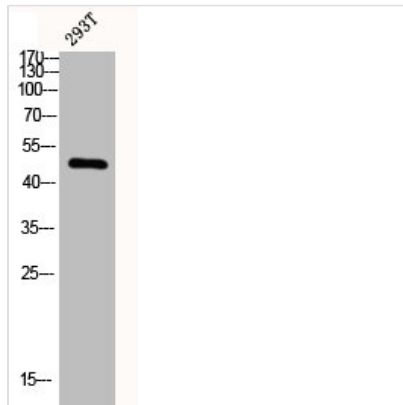
Western Blot analysis of HeLa cells using ChemR23 Polyclonal Antibody



Western Blot analysis of NIH-3T3 K562 cells using ChemR23 Polyclonal Antibody



Western blot analysis of 293T lysis using ChemR23 antibody.



Western blot analysis of 293T lysis using ChemR23 antibody.