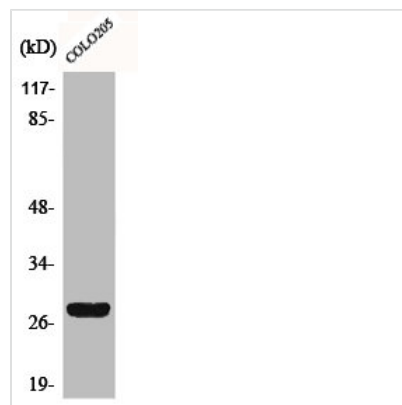




CD160 Antibody

Product Code	CSB-PA001426
Storage	Upon receipt, store at -20°C or -80°C. Avoid repeated freeze.
Uniprot No.	O95971
Immunogen	Synthesized peptide derived from the Internal region of Human CD160.
Raised In	Rabbit
Species Reactivity	Human
Tested Applications	WB,IF,ELISA;WB:1/500-1/2000.IF:1/200-1/1000.ELISA:1/20000
Form	Liquid
Conjugate	Non-conjugated
Storage Buffer	Liquid in PBS containing 50% glycerol, 0.5% BSA and 0.02% sodium azide.
Purification Method	The antibody was affinity-purified from rabbit antiserum by affinity-chromatography using epitope-specific immunogen.
Isotype	IgG
Alias	CD160; BY55; CD160 antigen; Natural killer cell receptor BY55; CD antigen CD160
Species	Homo sapiens (Human)
Target Names	CD160

Image



Western Blot analysis of COLO205 cells using CD160 Polyclonal Antibody